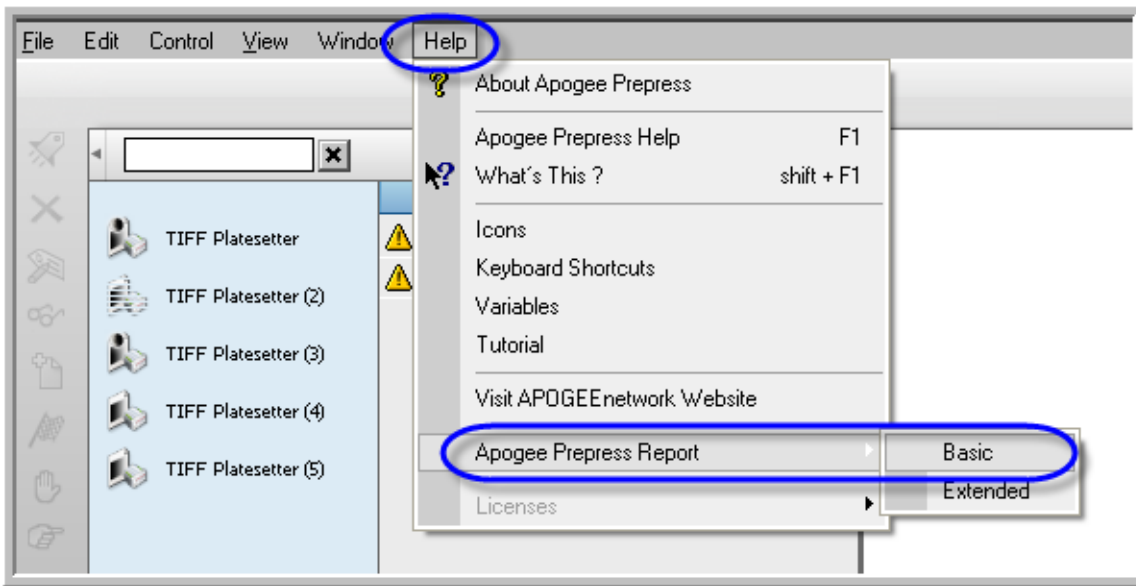


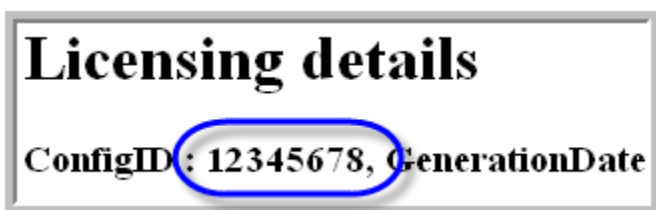
1. To find your configuration ID number, open your APOGEE Prepress client. In the menu bar, go to Help > Apogee Prepress Report > Basic



2. Automatically a report is generated and opened in your default web browser. Within this report, select "**Licensing details**".



3. Here you'll find you're the configuration ID number of your APOGEE Prepress system.



4. Copy and Paste your config ID into your Forum Request form.