

Creating Multi-part Jobs Sample

This Advanced Tutorial introduces you to Multi-part jobs. You will perform a series of exercises which demonstrate how to use 'Parts' to combine several :APOGEE Prepress jobs that belong to the same product (cover, body, insert, flap around cover, etc.) into a single job. It also shows you how to use 'Production Sets' to replace Discard flows with a simpler single flow which allows you to specify different processing and output settings.

Duration: You will need approximately 3 hours to complete the lessons in this Advanced Tutorial.

- ▶ Advanced Tutorial Objectives 2
- ▶ Before You Begin 3
- ▶ Contact Us 4
- ▶ What are Multi-part Jobs? 4
- ▶ Defining Multi-part Jobs 4
- ▶ Lesson 1: Creating a Basic Multi-part SaddleStitched Job 6
- ▶ Lesson 2: Creating a Basic Multi-part PerfectBound Job..... 13
- ▶ Lesson 3: Creating a 3-part Job with an Insert 18
- ▶ Lesson 4: Creating a 2-part Job with a 6-page Cover..... 25
- ▶ Lesson 5: Creating a Job with a Spot Color on the Cover..... 30
- ▶ Lesson 6: Creating a Job with a Smaller Media Size..... 34
- ▶ Lesson 7: Creating a Job Containing Gray Pages..... 38
- ▶ Lesson 8: Creating an MIS Job 42



This tutorial is only a preview of the full advanced tutorial.

If you would like to obtain the full version of this tutorial or a training on this subject, please contact your local Agfa sales or service representative.

Worldwide addresses of our local Agfa representatives can be found on our Agfa Graphics website:

http://www.agfagraphics.com/global/en/mainings/about_us/worldwide/index.jsp

More tutorials are available on www.apogee.agfa.net

Advanced Tutorial Objectives

The Tutorial is divided into a series of lessons. In these lessons, you will learn how to:

- Create a 2-part SaddleStitched job (body and a cover) with the same settings. The result will be an integrated job in which both body and cover parts use the same paper, colors and press.
- Create a 2-part PerfectBound job (body and a cover). The result will be a job in which the body and cover parts can be processed separately (using different paper, colors and press).
- Create a 3-part job (body, cover and insert). The result will be a job in which all three parts can be processed separately (using different paper, colors and press).
- Create a 2 part job (body and 6-page cover). The result will be a 2-part job with a 6-page cover on one sheet and 16 body pages on the other.
- Create a cover part which needs to be processed with a different color (a spot color). To do this, you will create and use an additional Production Set for the spot color.
- Create a cover part with a different plate size. To do this, you will create and use an additional Production Set for the different plate size.
- Set up four body pages to print in gray. To do this, you will create and use an additional Production Set for the gray pages.
- Create a job ticket with 3 parts. Sample documents will be automatically input by MIS and you will check the output from a TIFF Platesetter.

Before You Begin

Before you start the lessons in this Advanced Tutorial, make sure that you are logged on to the :APOGEE Prepress System with Administrator access level. You will also need the following sample files and tickets which are bundled together with this Advanced Tutorial PDF file:

- :APOGEE Prepress tickets
 - studentname-multipart-0001.ajt
 - studentname-multipart-0002.ajt
 - studentname-multipart-0003.ajt
 - studentname-multipart-0004.ajt
 - studentname-multipart-0008.aht
- Sample PDF files
 - Apogee Suite Cover.pdf
 - Apogee Suite Body.pdf
 - Apogee Automate 4Pages.pdf
 - Apogee Proof 6Pages.pdf
- Imposition Templates
 - A4 Tutorial PerfectBound.tpl
 - A4 Tutorial MP Cover 6 pages.tpl
 - A4 Tutorial Saddle.tpl
- JDF file
 - studentname-MP-MIS.jdf

NOTE: You will need to copy the templates to the ...\\<servername>\Preps\Templates folder that is used by the :APOGEE Prepress System.

These files are provided in a single ZIP file, which is available for downloading from the Graphics Portal - Services Library.

NOTE: While working through the lessons in this Advanced Tutorial, do not forget to replace **studentname** with your own name in the Administration tab.

Contact Us

Agfa welcomes your suggestions, questions or comments about this documentation. You can send e-mail feedback to: Apogee@agfa.com

What are Multi-part Jobs?

:APOGEE Prepress handles two types of jobs:

- **Single-part jobs:** A single-part job uses the same settings for the entire job: It has a single job name, single order number, single production plan with job-global parameter values and a single unstructured Run List.
- **Multi-part jobs:** A multi-part job is more complex than a simple job. This type of job typically comprises a number of sections (cover, editorial, sports section, etc.) each with different properties (paper type, color or B&W, binding style, number of colors, etc.). Additionally, different sheets may be printed on different presses, and so on.

Although you can produce simple jobs that address many of these more complex issues, there are limitations. Multi-part jobs on the other hand are specifically designed to handle these extra levels of complexity, and allow you to simplify your production plan.

Defining Multi-part Jobs

Multi-part jobs are defined in the Product tab, and are made up of **parts** and **production sets**.

- **Parts:** Used to combine several :APOGEE Prepress jobs (belonging to the same 'Product') into one job. These 'parts' represent the physical parts of the job (cover, body, insert, flap around cover, etc.).
- **Production sets:** Used to replace the time-consuming Discard flows into an easy single flow. These 'production sets' define the different processing and output settings of a job.

The Product Tab

A new tab - the Product tab - is used to set up and configure Multi-part jobs. The Product tab contains three panes:

- **Product:** Allows you to quickly access the Run List or Impose Task Processors in the production plan. Here, you can also change the number of pages in the job.
- **Parts:** Allows you to define the 'parts' described above.
- **Production Sets:** Allows you to define the 'production sets' described above.

NOTE: The Product tab is greyed out if there is no Impose Task Processor in the production plan. This is the same principle as the Pages tab, which is not available if there is no Run List Task Processor in the production plan.

Single-part and Existing Jobs

When you create a single-part job, :APOGEE Prepress creates one part and one production set. This default part/production set is always greyed out in single-part jobs. In this case, you can simply ignore the Product tab, and set up your job as usual. If you upgrade from previous versions of :APOGEE Prepress, all jobs, Hot Tickets and Ticket Templates have a single part and production set added. If you wish, you can hide complexity in single-part jobs by collapsing the views.

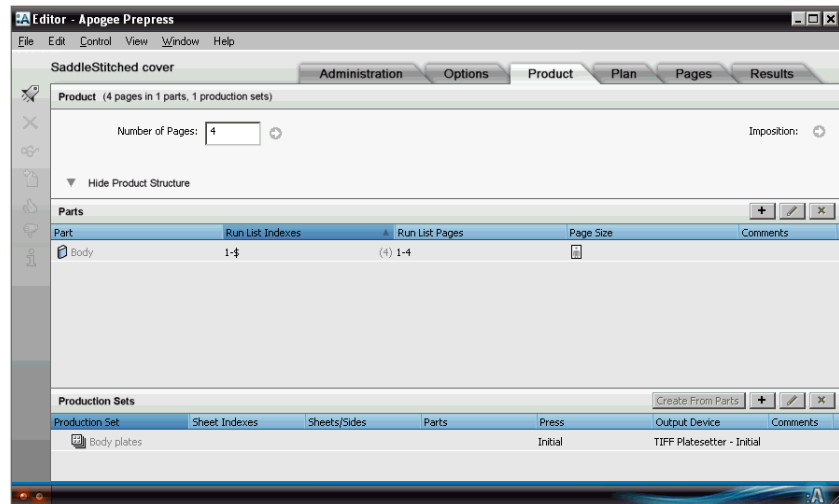
NOTE: When you create new parts/production sets, the corresponding Run List Indexes/signatures will be taken from the default part/production set.

LESSON 1: Creating a Basic Multi-part SaddleStitched Job (Fully included)

In this lesson, you will create a SaddleStitched job ticket with 2 parts (body and a cover). You will then input some sample documents, place the pages in the Run List and check the output from a TIFF Platesetter. The result will be a job in which both body and cover parts use the same paper, colors and press.

▷ To create a 2-part SaddleStitched job

- 1 From the Jobs window, select **File > Open**.
- 2 Select and open the **studentname-multipart-0001.ajt** sample ticket.
- 3 In the **Administration** tab, replace **studentname** with your own name in the Order number field.
- 4 Enter **SaddleStitched cover** in the Job name field.
- 5 Click the **Product** tab.



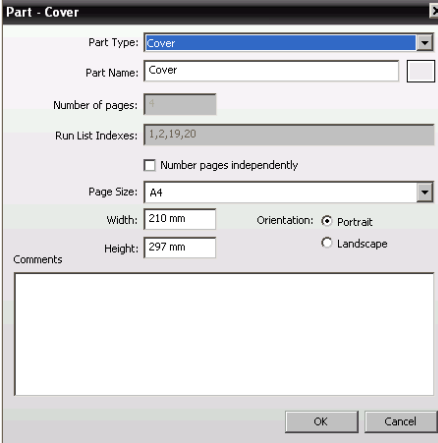
The Product tab displays information on multi-part jobs. It indicates how the job is structured, and how each individual part of the job will be processed (colors used, output devices, etc.).

- 6 In the **Product** pane, set the **Number of pages** to **20**.
- 7 Click the **Add** button at the top righthand side of the **Parts** pane.



- 8 In the Part dialog box, click the **Part Type** list and select **Cover**.

You will notice that a **Part Name** is automatically selected (Cover). If you wish, you can enter a different name. This name will automatically replace the \$PART variable throughout the :APOGEE Prepress system.

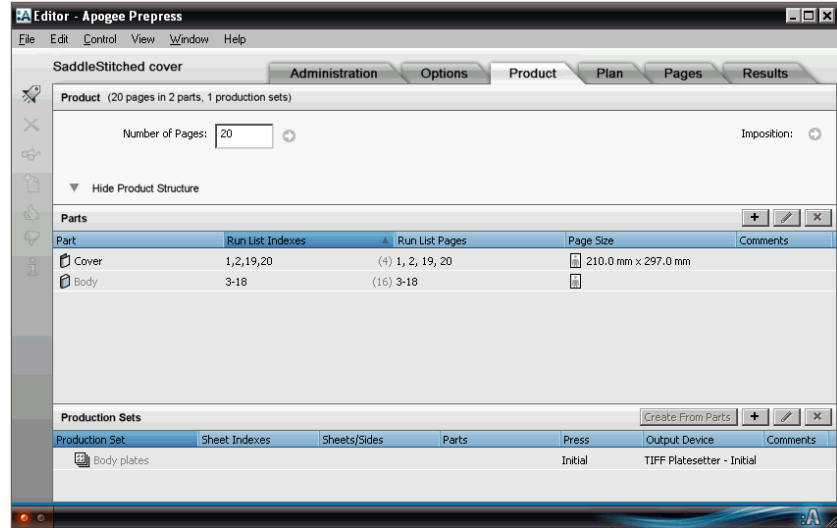


This predefined part has 4 pages. It will automatically take the first two and last two pages from the Run List.

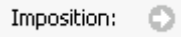
NOTE: For a cover with a different setup, you should choose **Plain** as Part Type. For more information, refer to “Creating a 2-part Job with a 6-page Cover” on page 25.

- 9 Keep all the other settings as they are, and click **OK**.

A new part is created with Run List Indexes 1, 2, 19 and 20. These pages are taken from the default **Body** part.



10 In the **Product** pane, click the **Imposition** arrow.



The **Plan** tab is opened in the Ticket Editor.

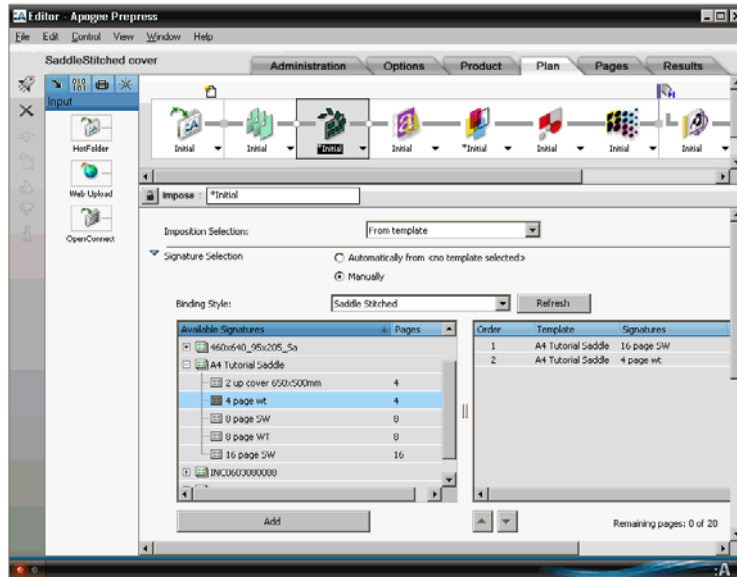
11 In the **Impose** settings, expand the **A4 Tutorial Saddle** template.

NOTE: If this template is not available, click **Refresh** to update the list of available templates.

12 From the **Available Signatures** list, add the following signatures:

- First, add the **16 Pages SW** signature

- Then, add the 4 Page WT signature.



13 Submit the job.

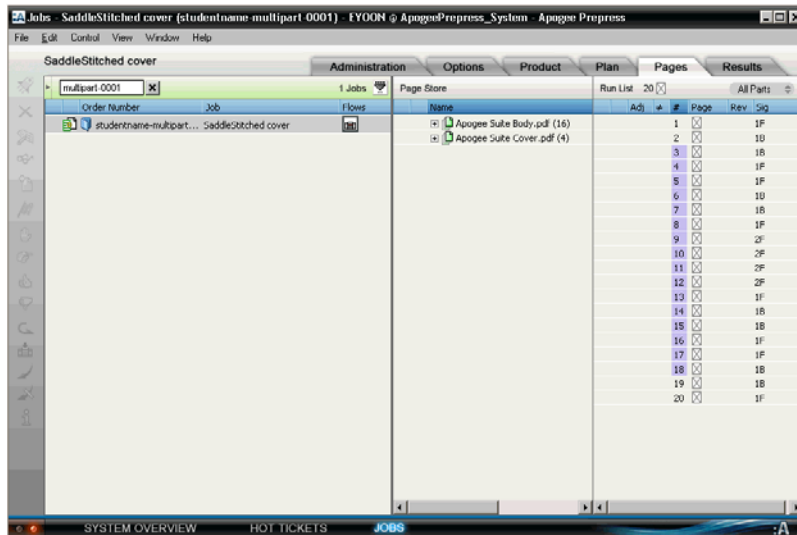
The new job is displayed in the Jobs window.

▶ To input documents for your job

- 1 In the Jobs window, context-click the **studentname-multipart-0001** job, and select **Upload Document** from the context menu.
- 2 Locate and select both the **Apogee Suite Cover.pdf** and **Apogee Suite Body.pdf** sample documents, and click **Open**.

:APOGEE Prepress starts to process these documents.

3 Select the **Pages** tab.



NOTE: If there are a lot of parts, the part names are abbreviated, or the buttons may be replaced by a drop-down list.

You will see the 2 documents have been added to the Page Store. All parts are initially displayed.

In the Run List header you will see the parts filter. This allows you to refine the view to the pages of a single part only, and each part is color-coded.

▶ To add pages to the 2 parts of your job

- 1 Filter the parts view by clicking the **Cover** part filter button.



Only the Cover parts are now displayed in the Run List.

NOTE: You can also use the <PART> variable in the Run List Task Processor to place pages automatically.

- 2 Drag and Drop the **Apogee Suite Cover.pdf** sample document in the Run List.

Page Store		Run List 1 ●		All Parts		<input checked="" type="checkbox"/> Cover	<input type="checkbox"/> Body
Name		Adj	#	Page	Rev	Sig	
Apogee Suite Body.pdf (16)			1	Apogee Suite Cover.pdf - 1		1F	
Apogee Suite Cover.pdf (4)			2	Apogee Suite Cover.pdf - 2		1B	
			19	Apogee Suite Cover.pdf - 3		1B	
			20	Apogee Suite Cover.pdf - 4		1F	

- 3 Click the **Body** part filter button to display only the Body part.
- 4 Drag and Drop the **Apogee Suite Body.pdf** sample document in the Run List.

5 Click the **All Parts** filter button to display all parts again.

Page Store		Run List 1 ●		All Parts	Cover	Body
Name	Adj	#	Page	Rev	Sig	
[-] Apogee Suite Body.pdf (16)		1	Apogee Suite Cover.pdf - 1	1F		
		2	Apogee Suite Cover.pdf - 2	1B		
		3	Apogee Suite Body.pdf - 1	1B		
[-] Apogee Suite Cover.pdf (4)		4	Apogee Suite Body.pdf - 2	1F		
		5	Apogee Suite Body.pdf - 3	1F		
		6	Apogee Suite Body.pdf - 4	1B		
		7	Apogee Suite Body.pdf - 5	1B		
		8	Apogee Suite Body.pdf - 6	1F		
		9	Apogee Suite Body.pdf - 7	2F		
		10	Apogee Suite Body.pdf - 8	2F		
		11	Apogee Suite Body.pdf - 9	2F		
		12	Apogee Suite Body.pdf - 10	2F		
		13	Apogee Suite Body.pdf - 11	1F		
		14	Apogee Suite Body.pdf - 12	1B		
		15	Apogee Suite Body.pdf - 13	1B		
		16	Apogee Suite Body.pdf - 14	1F		
		17	Apogee Suite Body.pdf - 15	1F		
		18	Apogee Suite Body.pdf - 16	1B		
		19	Apogee Suite Cover.pdf - 3	1B		
		20	Apogee Suite Cover.pdf - 4	1F		

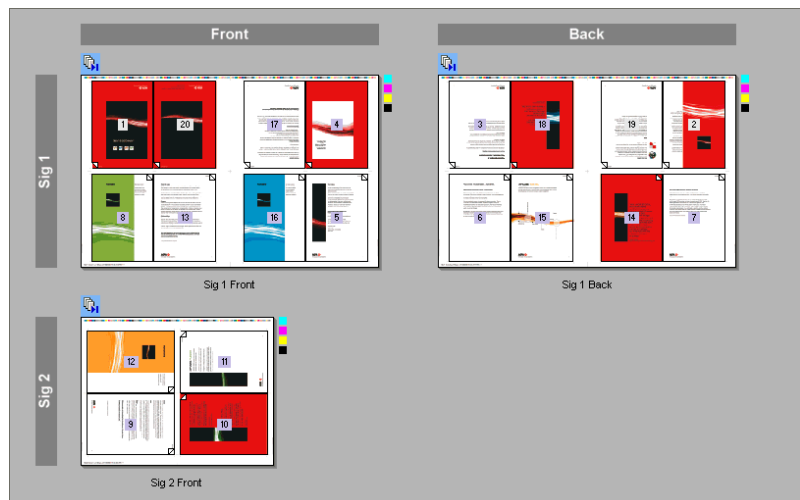
6 **Submit** your changes.

▷ **To view the job results**

- 1 In the Jobs window, select the **studentname-multipart-0001** job, and select the **Results** tab.

NOTE: If not already selected, choose **View > Show > Page Number**.

- 2 Look at the Cover pages in **Sig 1**.



You can see from the page numbers that this job has an integrated cover because it is placed on the same sheet, with the same paper and in the same folding scheme.

LESSON 2: Creating a Basic Multi-part PerfectBound Job

In this lesson, you will create a PerfectBound job ticket with 2 parts (body and a cover). You will then input some sample documents, place the pages in the Run List and check the output from a TIFF Platesetter. The result will be a job in which the body and cover parts can be processed separately (using different paper, colors and press).

▷ To create a 2-part PerfectBound job

NOTE: It is not possible to use a SaddleStitched Cover with a PerfectBound body in a Multi-part job. In this case, you still need to create 2 single-part jobs.

- 1 From the Jobs window, select **File > Open**.
- 2 Select and open the **studentname-multipart-0002** sample ticket.
- 3 In the **Administration** tab, replace **studentname** with your own name in the Order number field.
- 4 Enter **PerfectBound cover** in the Job name field.
- 5 Click the **Product** tab.
- 6 In the **Product** pane, set the **Number of pages** to **20**.
- 7 Click the **Add** button at the top righthand side of the **Parts** pane.



- 8 In the Part dialog box, click the **Part Type** list and select **Cover (perfect bound)**.

You will notice that a **Part Name** is automatically selected(Cover). If you



This tutorial is only a preview of the full advanced tutorial.

If you would like to obtain the full version of this tutorial or a training on this subject, please contact your local Agfa sales or service representative.

Worldwide addresses of our local Agfa representatives can be found on our Agfa Graphics website:
http://www.agfagraphics.com/global/en/mainings/about_us/worldwide/index.jsp

More tutorials are available on www.apogee.agfa.net

OK Cancel