

Color Management for Proofing - **Sample**

In this Advanced Tutorial you will learn about the features related to color management and profile usage on a proofer.

Duration: You will need about 4 hours to complete the lessons in this Advanced Tutorial.

▶ Advanced Tutorial Objectives	2
▶ Before You Begin	2
▶ About Proofing	3
▶ Contact Us	3
▶ Lesson 1: Working with Spot Colors	4
▶ Lesson 2: Working with Custom Color Books	12
▶ Lesson 3: Using a Spot Color Exception	24
▶ Lesson 4: Simulation Curves for Proofers	32
▶ Lesson 5: Black and White Proofing	37



This tutorial is only a preview of the full basic tutorial.

If you would like to obtain the full version of this tutorial or a training on this subject, please contact your local Agfa sales or service representative.

Worldwide addresses of our local Agfa representatives can be found on our Agfa Graphics website:

http://www.agfagraphics.com/global/en/maings/about_us/worldwide/index.jsp

Advanced Tutorial Objectives

You will learn how to:

- Use color books and work with Pantone colors.
- Work with spot color exceptions.
- Handle layer-thickness differences in custom color books, and how to change the colorant type of a custom color book.
- Create a curve to make some last-minute changes in the color behavior of the proofer.
- Print a grayscale document on a proofer using black ink only.

Before You Begin

Before you start the lessons in this Advanced Tutorial, make sure that you are logged on to the :APOGEE Prepress System with Administrator access level.

You will also need the following sample files and tickets which are bundled together with this Advanced Tutorial PDF file (or are already available in the ...\\SupportFiles\\SampleFiles folder):

- PDF files
 - Quick Tour Job with spot color.pdf
 - Pantone Overprint Lesson2.pdf
 - PDF_colormangement.pdf
 - Apogee Proof 1Page.pdf
- :APOGEE Prepress Tickets
 - studentname-CMS-proofing-0001.aht
 - studentname-CMS-proofing-0002.aht
 - studentname-CMS-proofing-0003.aht

- studentname-CMS-proofing-0004.ahf
- studentname-CMS-proofing-0005.ahf
- MIME files
 - ColorTune Spot Book.mime
 - ColorTune Spot Book_Thinner layers.mime
 - ColorTune Spot Book_Opaque.mime
- 8P Epson 7880 or another proofer

These files are provided in a single ZIP file, which is available for downloading from the Graphics Portal - Services Library website.

NOTE: While working through the lessons in this Advanced Tutorial, do not forget to replace **studentname** with your own name in the Administration tab.

About Proofing

A proof allows you to verify and correct different aspects of a job before committing it to press. There are two types of proofs:

- An **Imposition Proof** helps you to check whether the chosen imposition scheme correctly produces the required result after folding and cutting.
- A **Page Proof** allows you to check the content and color reproduction of specific pages. Color proofs should closely match the expected press print output. Each page is printed separately.

This Advanced Tutorial deals with page proofs.

Contact Us

Agfa welcomes your suggestions, questions or comments about this documentation. You can send e-mail feedback to: Apogee@agfa.com

LESSON 1: Working with Spot Colors

In the printing industry, a spot color is a color which is printed using a single separation plate as opposed to process colors which are broken down into cyan, magenta, yellow and black. Spot colors are very common in the packaging world or used as an extra color on standard commercial work. They are typically used to reproduce colors vividly in a way that cannot be reproduced easily with process colors. The *color description* of spot colors can be taken from a standardized spot color library (e.g. Pantone) or from a custom spot color book.

Spot colors require special attention in the proofer world. They still need to be simulated and reproduced with the extended ink set of the proofer. They are not converted to the press profile since the press profile only describes the process color gamut and spot colors are not part of that. The spot color description can be taken from application (Lab or CMYK) or from a spot color book (Lab or spectral data). The color is then reproduced on the proofer using the info from the spot color book and converted to the proofer profile. The press profile is only used to know the paper simulation when the Absolute Colorimetric rendering intent is used.

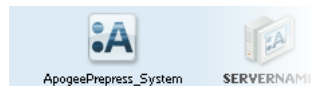
Using Pantone Color Books

In this lesson you will learn how to use color books and work with Pantone colors.

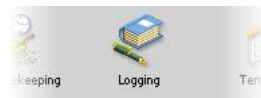
▶ To enable Color Management logging

First, you need to make sure that Color Management events are logged by the :APOGEE Prepress server. Proceed as follows:

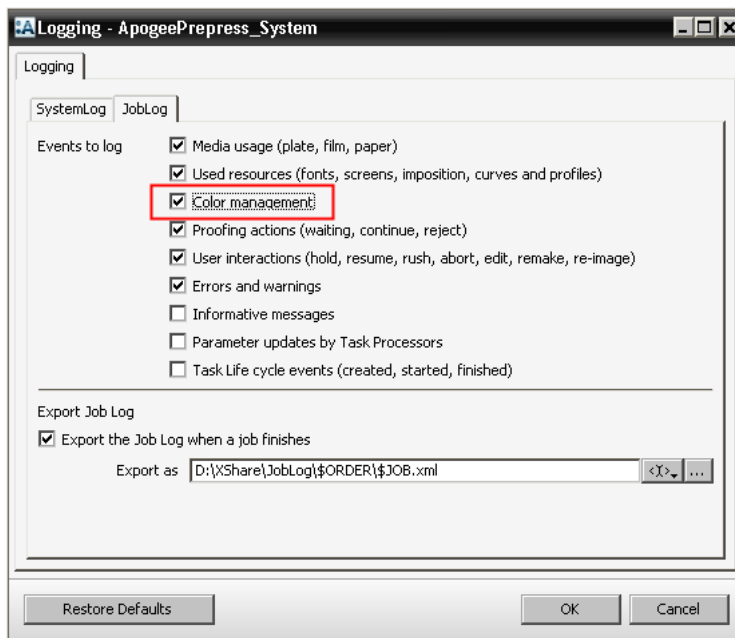
- 1 Click the :APOGEE Prepress server icon in the top pane of the **System Overview** window.



- 2 Double-click the **Logging** resource.



- 3 Click the **JobLog** tab and select **Color Management**.



4 Click OK.

▷ To configure a Hot Ticket and process a document

- 1 From the Hot Tickets window, open the **studentname-CMS-proofing-0001.aht** sample Hot Ticket.
- 2 Select the **Plan** tab.

Notice that there is a blank space in the plan. This is where you need to insert the specific proofer that you want to use for this exercise.



This tutorial is only a preview of the full basic tutorial.

If you would like to obtain the full version of this tutorial or a training on this subject, please contact your local Agfa sales or service representative.

Worldwide addresses of our local Agfa representatives can be found on our Agfa Graphics website:
http://www.agfagraphics.com/global/en/maings/about_us/worldwide/index.jsp

LESSON 3: Using a Spot Color Exception

In this lesson you will first print a document containing the Pantone Red 032 spot color. You will then create an exception for this spot color by editing its definition. Finally you will print a document containing the spot color exception and compare both printed proofs.

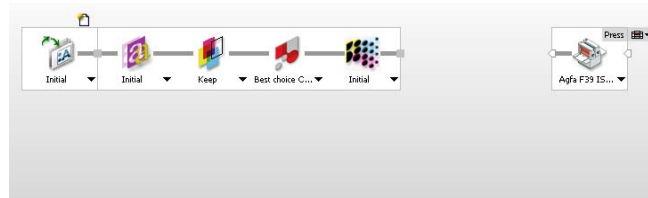
By creating a spot color exception for the Proofer you bypass the conversion from the Lab values of the color book through the Proofer Profile. This means that the Lab values will not be looked up in the color book. Instead :APOGEE Prepress will immediately use the manually entered CMYK values to render the spot color.

In the following exercises, we are using an 8P Epson 7880.

▷ To configure a Hot Ticket and process a document

- 1 Open the **studentname-CMS-proofing-0003.aht** sample Hot Ticket.
- 2 Select the **Plan** tab.

Notice that there is a blank space in the plan. This is where you need to insert the specific proofer that you want to use for this exercise.



- 3 Select your **Proofer** component, and drag it to the blank space in the plan.
For this exercise, we are using the 8P Epson 7880.
- 4 Select your Proofer - **Image** operation, and unlock the settings.
- 5 In the settings pane, select the **Image** tab.
- 6 Click the Orientation list, and select **Optimized**.
- 7 Select your Proofer - **Output** operation in the Production Plan, and choose an ADPB, SPB or AMDP UHQ parameter set.

NOTE: Make sure that the necessary media is also loaded on your proofer.

For this exercise, we are using the 8P-AMDP250-UHQ-720-cert parameter set.

8 Submit the Hot Ticket.

The studentname-proofing-0003 Hot Ticket is added to the Hot Ticket List.

9 Copy the **Quick Tour Job with spot color.pdf** sample file to your **studentname-CMS-proofing-0003** Hot Ticket.

The sample file is processed and is output on your proofer. Keep the output to compare later.

10 In the **Results** tab monitor the processing of the job.

The job is rendered and printed on your proofer.

▷ To create a Profile Color Exception

1 In the **System Overview** window, select your proofer.

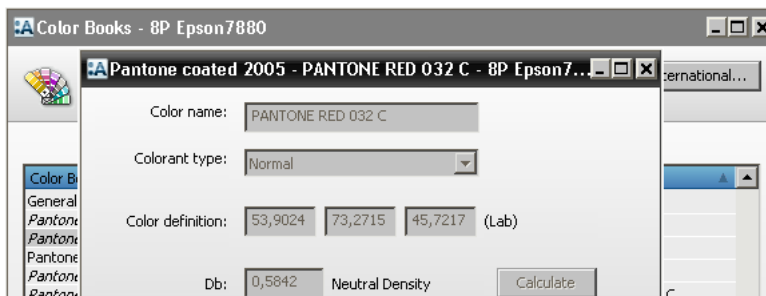
2 Double-click the **Color Books** Resource.

The Colors window is displayed.

3 Click the **Pantone Coated 2005** color book.

4 Edit the **Pantone Red 032 C** color.

The Pantone Coated 2005 - Pantone 100 C window appears.



This tutorial is only a preview of the full basic tutorial.

If you would like to obtain the full version of this tutorial or a training on this subject, please contact your local Agfa sales or service representative.

Worldwide addresses of our local Agfa representatives can be found on our Agfa Graphics website:

http://www.agfagraphics.com/global/en/mainings/about_us/worldwide/index.jsp

LESSON 5: Black and White Proofing (Fully included)

In this lesson you will learn how to print a document on a proofer in gray scale. The proof will be printed with all inks (colors) of the printer but the output will be gray.

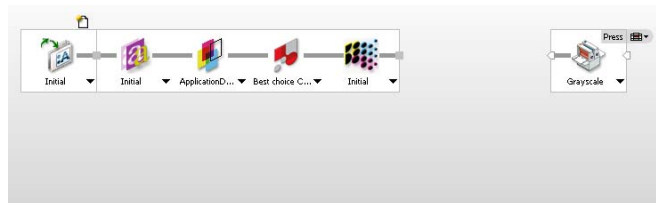
NOTE: If you have a 1C Output parameter set, you may want to print a black and white proof with black ink only.

In the following exercises, we are using a 8P Epson 7880.

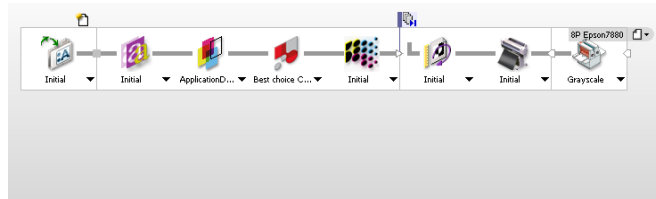
▷ To build the Production Plan

- 1 From the Hot Tickets window, open the **studentname-CMS-proofing-0005.aht** sample Hot Ticket.
- 2 Select the **Plan** tab.

Notice that there is a blank space in the plan. This is where you need to insert the specific proofer that you want to use for this exercise.



- 3 Select your **Proofer** component, and drag it to the blank space in the plan. For this exercise, we are using the 8P Epson 7880.
- 4 Place a **Collect for Output** Action between the PDF Render and the Proofer.



▷ To configure the Production Plan components

- 1 Click the **Image** Operation of your proofer, and unlock the settings.
- 2 Select the **Image** tab.

- 3 In the Image settings, select **Optimized** from the Orientation list.
- 4 Click the **Output** Operation of your proofer, and select the **8P-AMDP250-UHQ-720** Parameter Set.
- 5 Click the **Collect for Output** Action.
- 6 Select the **Automatically start printing when group is complete** option.

NOTE: You can put an Info strip on the proof by selecting the **SherpaJobLogStrip** border in the **Proofer Image** Parameter Set. This Info strip will show the used resources on proof. The Sherpa-JobLogStrip border contains this mark.

- 7 **Submit** the Hot Ticket.

The Hot Ticket is added to the Hot Ticket list.

▷ **To process a document**

- 1 Copy the **Apogee Proof 1Page.pdf** sample file to the studentname-proofing-0004 Hot Ticket.
- 2 In the **Results** tab monitor the processing of the job.

You will see that the job is rendered and printed on your proofer. The result is a proof of a grayscale press job, printed with the full-color ink set of the inkjet proofer. Use a magnifier to take a closer look and you will notice that some color ink drops may appear on the print.

