

# Split for Proof **Sample**

This Advanced Tutorial explains how to set up jobs with a Main flow and a Split for Proof flow. The Split for Proof flow allows you to make a 1-up or 2-up version of an imposition job. All imposition parameters such as offsets, clip boxes, shingling, rotations, marks, etc. that are applied in the Main flow are automatically kept in this second flow. The flow always contains an Impose component and a Proofer component.

**Duration:** You will need approximately 2 hours to complete the lessons in this Advanced Tutorial.

▶ Advanced Tutorial Objectives .....	2
▶ About Split for Proof .....	3
▶ Before You Begin .....	3
▶ Contact Us .....	4
▶ Lesson 1: Creating a 1-Up “Split for Proof” Saddle-Stitched Job .....	5
▶ Lesson 2: Creating a 2-Up “Split for Proof” Saddle-Stitched Job.....	8
▶ Lesson 3: Creating a 2-Up “Split for Proof” Perfect Bound Job.....	12
▶ Lesson 4: Shingling in a “Split for Proof” Flow.....	15
▶ Lesson 5: Using JDF Files with “Split for Proof” Jobs.....	19
▶ Lesson 6: Limiting Sheets for Folding and Setting Margins .....	21



**This tutorial is only a preview of the full advanced tutorial.**

If you would like to obtain the full version of this tutorial or a training on this subject, please contact your local Agfa sales or service representative.

Worldwide addresses of our local Agfa representatives can be found on our Agfa Graphics website:

[http://www.agfagraphics.com/global/en/mainings/about\\_us/worldwide/index.jsp](http://www.agfagraphics.com/global/en/mainings/about_us/worldwide/index.jsp)

More tutorials are available on [www.apogee.agfa.net](http://www.apogee.agfa.net)

## Advanced Tutorial Objectives

This Advanced Tutorial is divided into a series of lessons. In these lessons, you will learn how to:

- Create a Saddle-Stitched job with a Main flow and a Split for Proof flow. The Main flow creates an imposed 8-up version of the job. The Split for Proof flow creates a 1-up version of the imposed job.
- Create a Saddle-Stitched job with a Main flow and a Split for Proof flow. The Main flow creates an imposed 8-up version of the job. The Split for Proof flow creates a 2-up Saddle Stitched version of the imposed job. You will also learn how to set up the PDF Proofer to create a PDF copy of your proof on the :APOGEE Prepress system.
- Create a Perfect Bound job with a Main flow and a Split for Proof flow. The Main flow creates an imposed 8-up version of the job. The Split for Proof flow creates a 2-up Perfect Bound version of the imposed job.
- Set up an imposition job with Shingling and verify that the Shingling values applied in the Main flow are also applied in the Split for Proof flow.
- Import a JDF file to a job with a Main flow and a 2-up Split for Proof flow.
- Separate a job with one large stack of 2-up signatures into several smaller stacks. This is done to avoid creating one large stack of paper that can be difficult to fold. You will also learn how to change the margins on each side of the 2-up pages so that the results have equal margins.

## About Split for Proof

In a single flow with an Impose component, :APOGEE Prepress calculates the imposition of the entire job including all the pages and page positions, and all the marks and their positions.

With Split for Proof, you add a proofing flow that also contains an Impose component. In this flow, you have the option to split up the imposed job in either 1-up or 2-up flats.

- 1-up flats :APOGEE Prepress combines every front side with its accompanying back side.
- 2-up flats :APOGEE Prepress first picks all pairing pages from the page order in the Run List, then merges them, and finally combines front and back sides. A 2-up Split for Proof preserves the binding style and work style that is used in the Main flow.

**NOTE:** Because Split for Proof takes the page order specified in the Run List, it cannot be used to verify the folding scheme of the Main flow.

When using JDF files, binding style and work style are preserved if they are correctly supplied in the JDF file. Binding style and work style are not preserved when using PJTF files. In this case, :APOGEE Prepress always creates a Saddle-Stitched result.

## Before You Begin

Before you start the lessons in this Advanced Tutorial:

- 1 Make sure that you are logged on to the :APOGEE Prepress System with Service access level.
- 2 Restore the default settings for Split for Proof in:  
System Overview > :APOGEE Prepress System > Imposition Resources
- 3 Verify that you have a PDF Proofer installed on your system. If not, you can use another Proofer instead. In this tutorial we use the PDF Proofer component as proofing device.

You will also need the following sample files and tickets which are bundled together with this Advanced Tutorial PDF file:

- :APOGEE Prepress tickets
  - Split for Proof-SS-1up.ajt
  - Split for Proof-SS-2up.ajt
  - Split for Proof-JDF Input.ajt
- Sample files
  - ApogeePrepress Brochure.pdf
  - studentname-Split for Proof-0005\_SAll\_MARKS.pdf
  - studentname-Split for Proof-0005\_SAll\_jdf
- Imposition Templates
  - A4 Tutorial PerfectBound.tpl
  - A4 Tutorial Saddle.tpl

**NOTE:** You need to copy the templates to the Templates folder on the :APOGEE Prepress System. The location of this folder is specified in System Overview > System > Imposition resource > General tab.

These files are provided in a single ZIP file, which is available for downloading from the Graphics Portal - Services Library.

---

**NOTE:** While working through the lessons in this Advanced Tutorial, do not forget to replace **studentname** with your own name in the Administration tab.

---

## Contact Us

Agfa welcomes your suggestions, questions or comments about this documentation. You can send e-mail feedback to: [Apogee@agfa.com](mailto:Apogee@agfa.com)

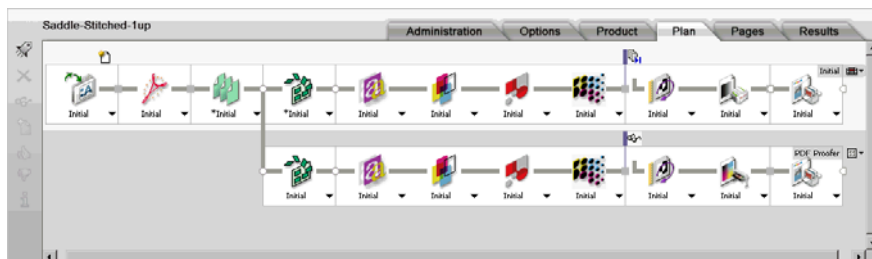
## LESSON 1: Creating a 1-Up “Split for Proof” Saddle-Stitched Job (Fully included)

In this lesson, you will learn how to create a Saddle-Stitched job with a Main flow and a Split for Proof flow. The Main flow creates an imposed 8-up version of the job. The Split for Proof flow creates a 1-up version of the imposed job.

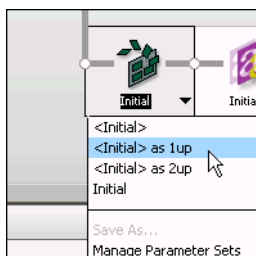
### ▶ To create a Saddle-Stitched job using a 1-up Split for Proof flow

- 1 From the Jobs window, select **File > Open**.
- 2 Select and open the **Split for Proof-SS-1up.ajt** sample ticket.
- 3 In the **Administration** tab, enter **studentname-Split for Proof-0001** in the Order number field.
- 4 Enter **Saddle-Stitched-1up** in the Job name field.
- 5 Click the **Plan** tab.

You will see that the Production Plan contains 2 flows.



- 6 Select the **Impose** component in the Main flow.
- 7 In the **Settings** pane, expand the **sample templates/metric/A4 Tutorial Saddle** folder.
- 8 Add **16 Pages SW** from the Available Signatures list.
- 9 Select the **Impose** component in the Split-for-Proof flow.
- 10 Click the Parameter Set list, and select **<Initial> as 1up** from the displayed options.



**NOTE:** You will see that the Impose settings in the Split-for-Proof flow automatically adopt the same settings selected for the Impose component in the Main flow.

---

### 11 Submit the job.

The new job is displayed in the Jobs window.

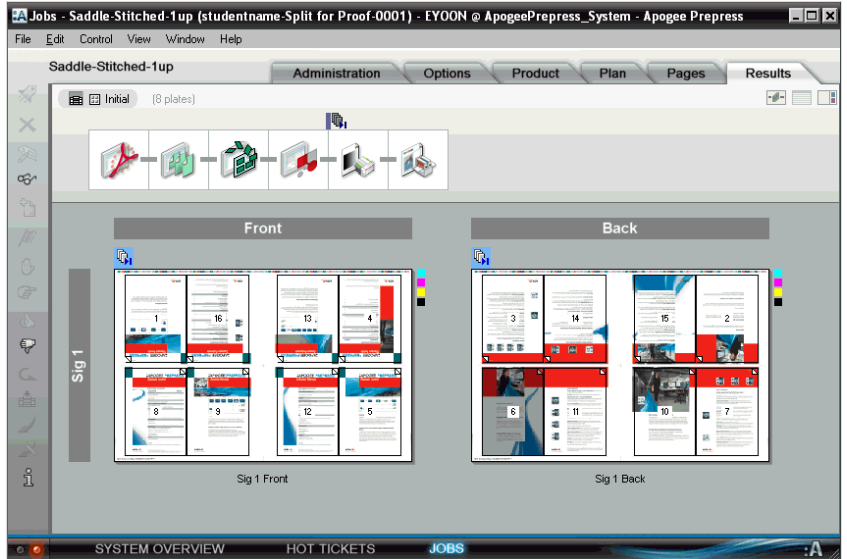
#### ▷ To input a document for your job

- 1 In the Jobs window, context-click the **studentname-Split for Proof-0001** job, and select **Upload Document** from the context menu.
- 2 Locate and select the **ApogeePrepress Brochure.pdf** sample document, and click **Open**.  
:APOGEE Prepress starts to process the document.
- 3 Select the **Pages** tab.  
You will see the **ApogeePrepress Brochure.pdf** has been added to the Page Store.
- 4 Expand the **ApogeePrepress Brochure.pdf** document.  
This document contains 32 pages.
- 5 Select Pages 1 to 16 and drag them to the Run List.
- 6 **Submit** your changes.

#### ▷ To view the job results

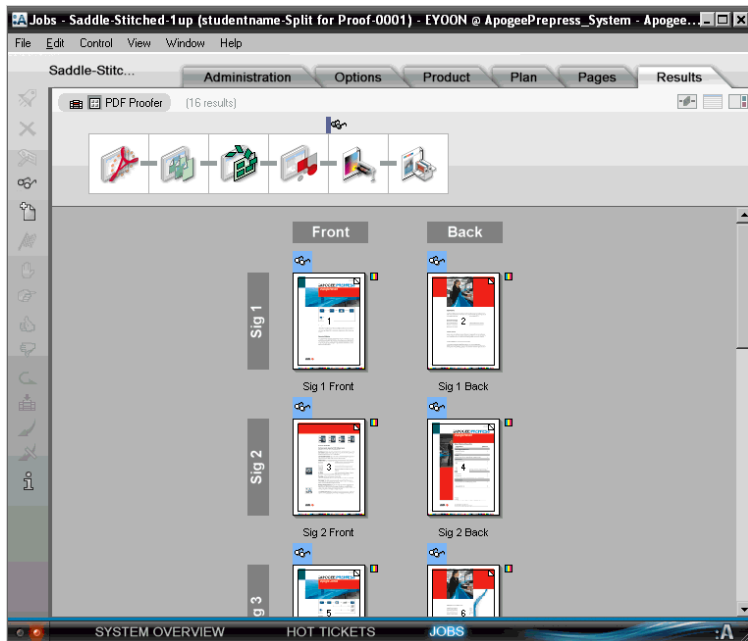
- 1 Select the **studentname-Split for Proof-0001** job in the Job List.
- 2 After the job has finished processing, select the **Results** tab to view the results of both flows.

The Main flow results display the 8-up front and back signature flats.



### 3 Select the Split for Proof flow.

The flow results display a 1-up version of your job.



## LESSON 2: Creating a 2-Up "Split for Proof" Saddle-Stitched Job

In this lesson, you will learn how to create a Saddle-Stitched job with a Main flow and a Split for Proof flow. The Main flow creates an imposed 8-up version of the job. The Split for Proof flow creates a 2-up Saddle Stitched version of the imposed job. You will also learn how to set up the PDF Proofer to create a PDF copy of your proof on the :APOGEE Prepress system.

▷ **To create a Saddle-Stitched job using a 2-up Split for Proof flow**

- 1 From the Jobs window, select **File > Open**.
- 2 Select and open the **Split for Proof-SS-2up.ajt** sample ticket.
- 3 In the **Administration** tab, enter **studentname-Split for Proof-0002** in the Order number field.
- 4 Enter **Saddle-Stitched-2up** in the Job name field.
- 5 Click the **Plan** tab.

The Production Plan contains 2 flows.

- 6 Select the **Impose** component in the Main flow.
- 7 In the **Settings** pane, expand the **sample templates/metric/A4 Tutorial Saddle** folder.
- 8 Add **16 Pages SW** from the Available Signatures list.
- 9 Add a 2nd **16 Pages SW** signature.



**This tutorial is only a preview of the full advanced tutorial.**

If you would like to obtain the full version of this tutorial or a training on this subject, please contact your local Agfa sales or service representative.

Worldwide addresses of our local Agfa representatives can be found on our Agfa Graphics website:

[http://www.agfagraphics.com/global/en/maings/about\\_us/worldwide/index.jsp](http://www.agfagraphics.com/global/en/maings/about_us/worldwide/index.jsp)

More tutorials are available on [www.apogee.agfa.net](http://www.apogee.agfa.net)