

At A Glance:

This will explain the basics of the operator interaction with Agfa Apogee Impose, the task processors involved, and the navigation through the interface.

Applies To:

Prepress Integrate, Manage

How It Works:

Apogee Impose runs only in the Windows Apogee Prepress Client. To use Apogee Impose on a Macintosh, the client must run within an emulated Windows environment or within a VNC session to the Apogee Prepress server or satellite.

Macintosh programs like Parallels (or Boot Camp) are a couple of options for running a Windows environment.

For a single-user environment, VNC can be used to access the Apogee server or a satellite running the client. VNC is included on all OS 10.6 Macs or higher.

To use Apogee Impose, the Apogee Prepress Client must have Administrative access rights. This can be checked from Preferences, within the Edit menu [1].

With the client running, open the Preferences dialog to set Apogee Impose access privileges [2]. Click the 'Imposition Editor' tab, which determines client access to the Apogee Impose imposition editor. This can be set on or off [3].

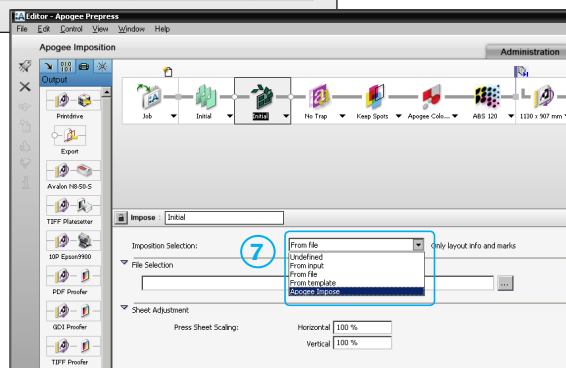
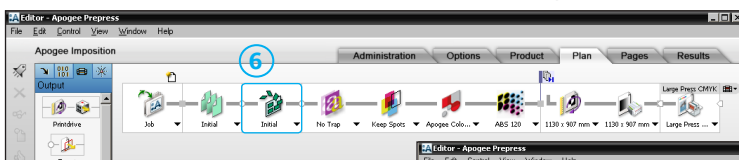
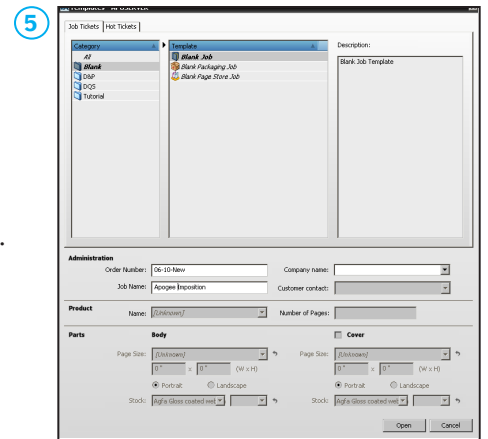
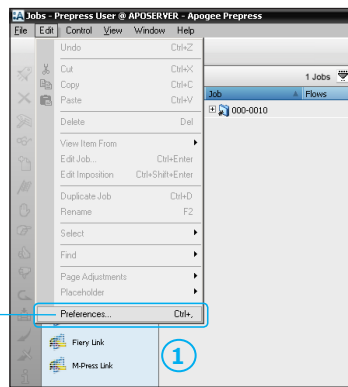
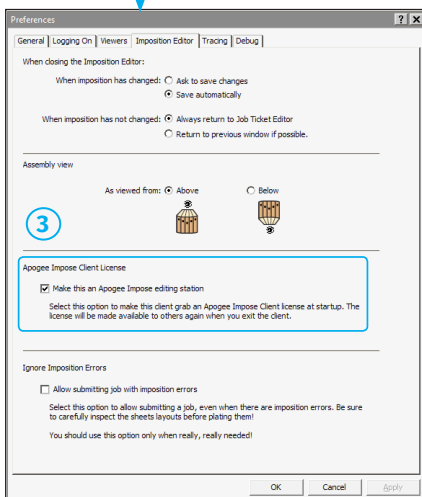
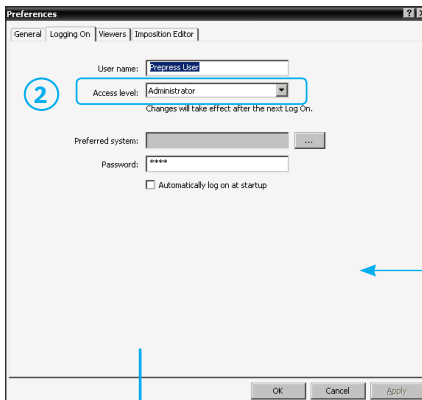
To understand how and where settings for Apogee Impose reside, let's start by making a new blank job [4].

Enter anything for an Order number and Job name,

click 'Open' to open the Editor window [5].

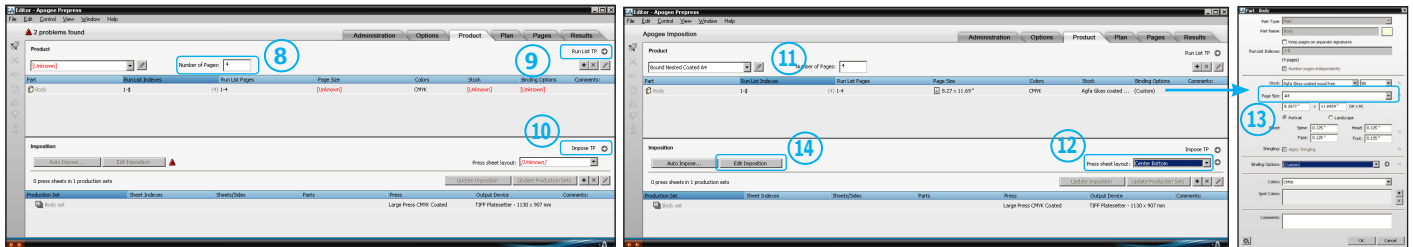
Create a single flow job with an Impose TP [6] that outputs to a TIFF Platesetter. This example uses the Large Press CMYK as the Generic Press.

In the imposition task, select Apogee Impose as the imposition method [7].



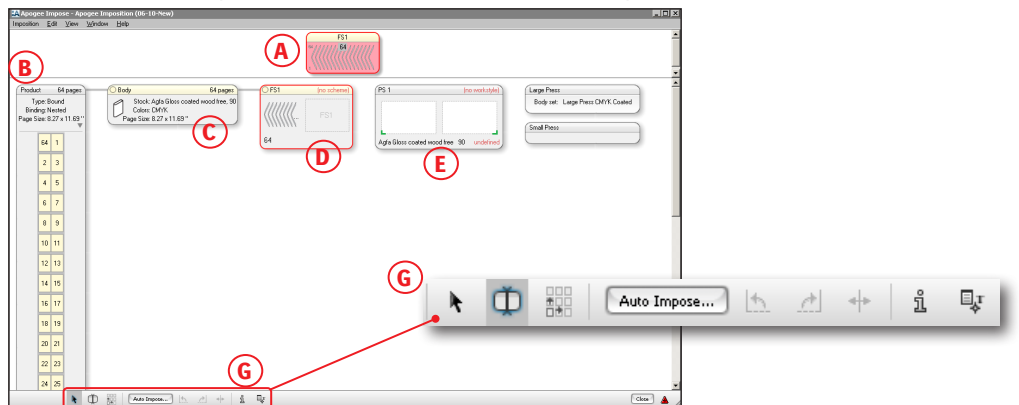
Now, let's go to the Product tab.

The number of pages [8] is determined by the value entered in the Run List task. There's a link that takes you directly to this task [9]. There's also a link that takes you to the Impose task [10].



Within the Product Tab, a Product [11] and a Press Sheet Layout [12] must be defined before the Imposition Editor is available. Once they are assigned, the page size may be changed by double-clicking on the Part [13].

To get into the Imposition Editor, click on the Edit Imposition button [14].

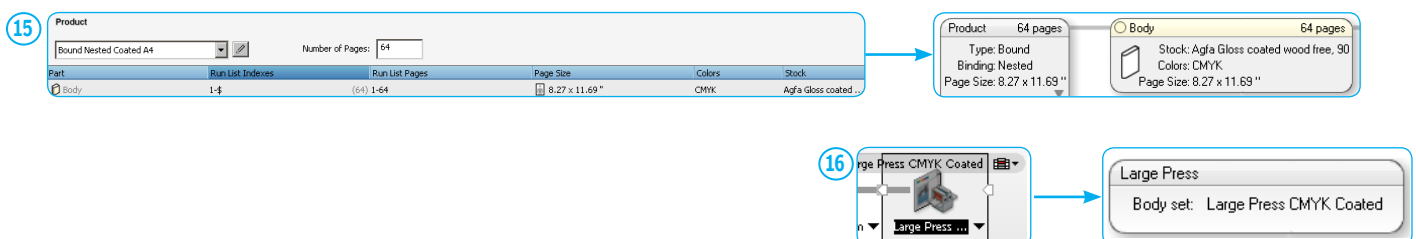


Here is a quick overview of the Product view window for Apogee Impose.

- A. Assembly Pane - shows how the product will be assembled, such as nested or stacked.
- B. Product and Pages - shows product type, binding and page size, as defined previously.
- C. Parts - shows the parts for the job, stock, color and page size, as defined previously.
- D. Fold Sheets - shows the fold sheets with their associated folding schemes for the job.
- E. Press Sheets - shows the press sheets to be printed.
- F. Press - shows all available presses that have been defined in the Generic Press TP.
- G. Tool Bar - contains tools for selection, split assembly, repeat, Auto Impose, rotation/mirror, inspector (info), and mark set inspector.

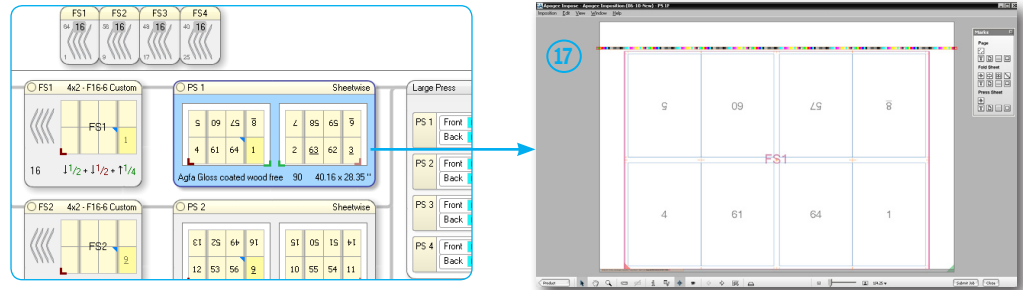
There is a list of shortcuts related to the toolbar at the end of this document.

Notice how the page size, stock, and binding follow the selections from the Product tab [15] and the Press setting follows the parameter set selection from Generic Press [16].



When folding schemes have been selected and assigned to press sheets, any press sheet can be edited by double-clicking on it.

This will open the Press Sheet View window [17].

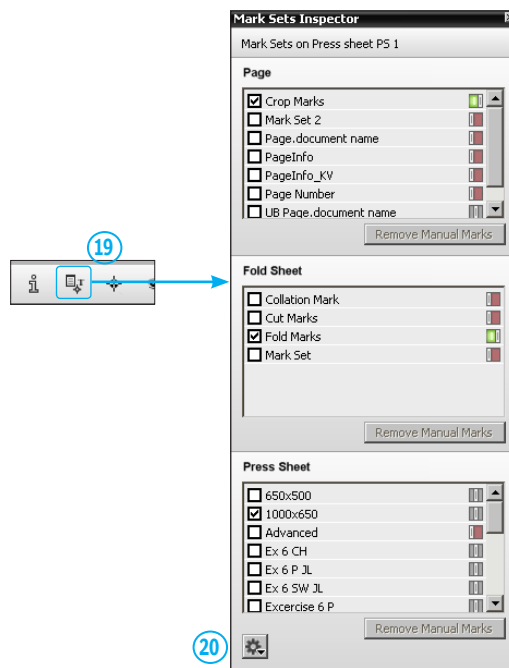


This is good place to get comfortable with where mark sets are automatically placed based on conditional values defined in the Mark Set Engraver.

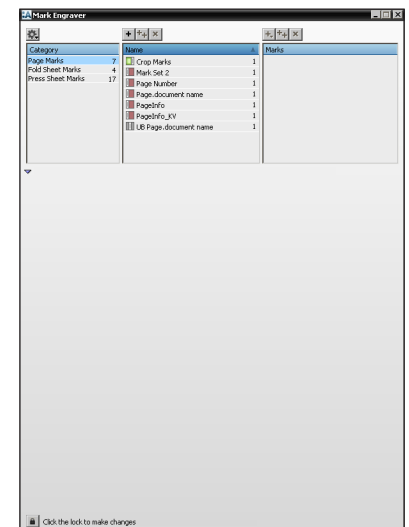
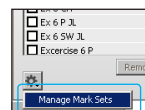
The tool bar at the bottom of the window [18] has tools for returning to Product view, object selection, moving objects, zooming, measurements, inspector, mark sets inspector, marks palette, view options, switching sheets, turning the sheet (view the back), light table, slider based zoom.

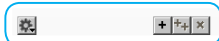


To easily see which mark sets are assigned to a press sheet or turn on/off different mark sets, open the Mark Sets Inspector [19]. A checkbox will show which mark sets are in use.



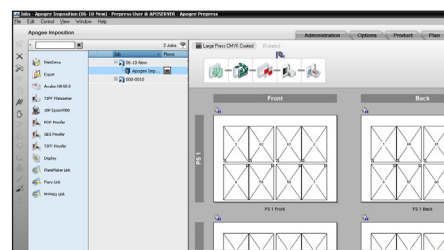
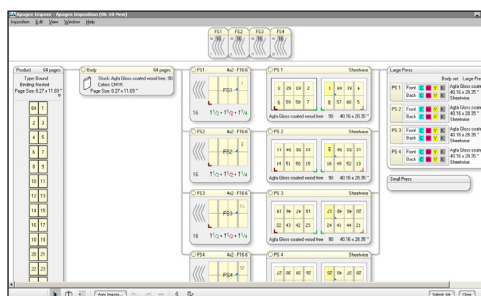
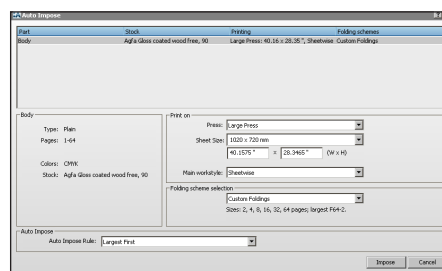
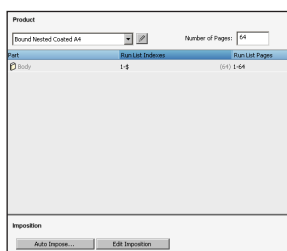
Mark sets can be managed by opening the Mark Engraver from the gear icon at the bottom left [20].





In any window, the gear icon is used to manage resources, like mark sets or mark layering within the Mark Engraver. Just like in other Apogee setting windows, the plus is used to add things, the double-plus is to copy something, and the X is, of course, delete.

There are certainly some nice tools included with Apogee Impose, but Apogee is built around the concept of automation, so there is an Auto Impose button within the Product tab. Why create a new template or edit an existing template for every job? Hit the Auto Impose button, fill in fields for the press, sheet size and workstyle and let Apogee figure out how to impose the job.



Apogee Impose has several navigational shortcuts which make switching windows or submitting a job a breeze. For a complete list of shortcuts, please see the Help menu on any client.

