



Start Apogee PlateMaker

Boot Apogee PlateMaker and Launch the PlateMaker Client

Starting up the Platemaker Server and Client

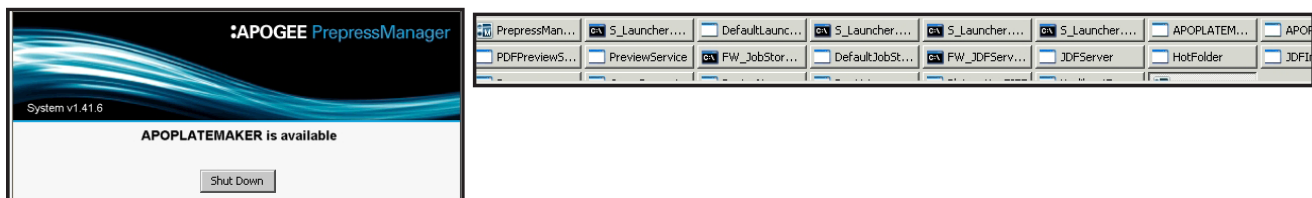
Audience: Customer, Technical

Product: Apogee Prepress, Platemaker

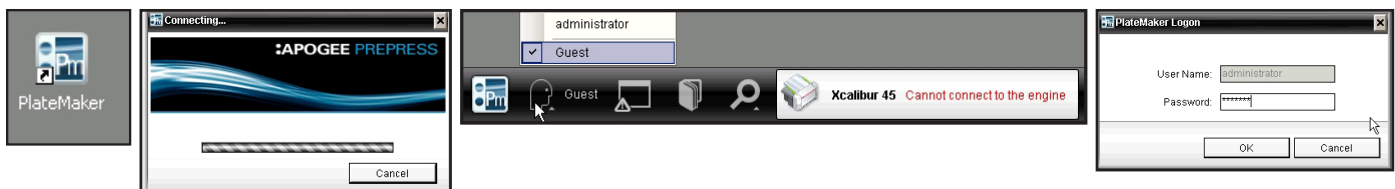
After booting Windows and logging in to Apogee PlateMaker Server, Start the PlateMaker console.



Double click on the PrepressManager icon and when the window opens and finishes checking, click Start.

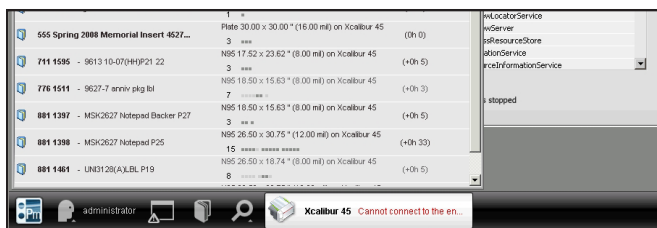


When all of the modules within PlateMaker have started, the console will indicate PlateMaker is available.



Double click on the PlateMaker client Icon to start the client interface.

When the Icon bar appears, click on the “head” icon to log onto the PlateMaker client. Enter the password.



Click on the “book” icon to open the job list and view jobs that are ready to plate.