



Configuration Manager restore:

Restore Apogee Prepress settings

Use Configuration Manager to retrieve individual settings or to do a complete restore of all parameters and settings within Apogee Prepress.

Audience: Customer, Technical:

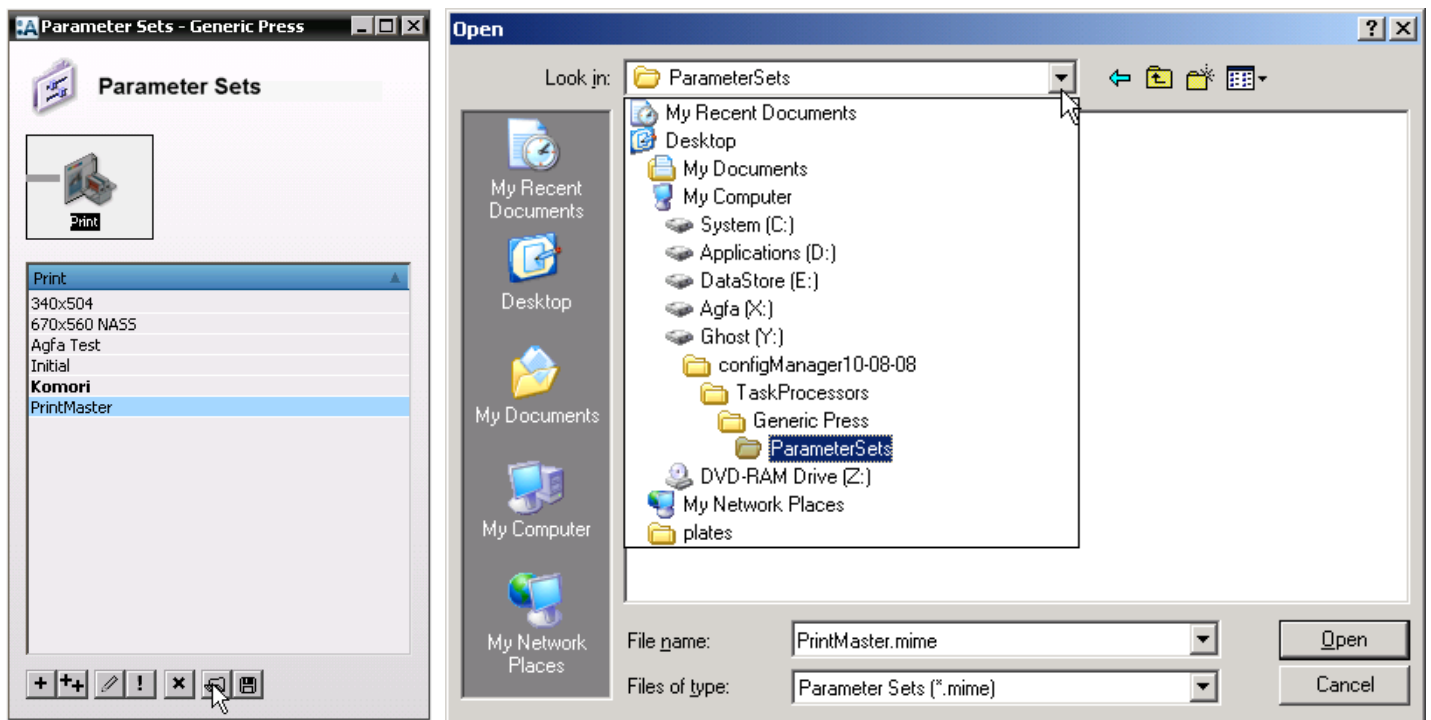
Product: Apogee X, Apogee Prepress

Restore Apogee Settings

After creating a backup with Configuration Manager, settings can be restored as a group or one at a time. Usually, only individual settings need to be restored. The complete restore is necessary only after a re-install of Apogee Prepress and is much less frequently done.

Restore individual settings

To restore a setting, you will import the saved *.mime file from the saved folder into Apogee Prepress.



If a parameter set has accidental changes made or becomes lost or saved over, go to the parameter set category, click the folder icon and navigate to the saved folders from Configuration Manager. Inside the folder, locate the parameter.mime in question and choose Open.

The imported parameter will replace the one within Apogee Prepress.

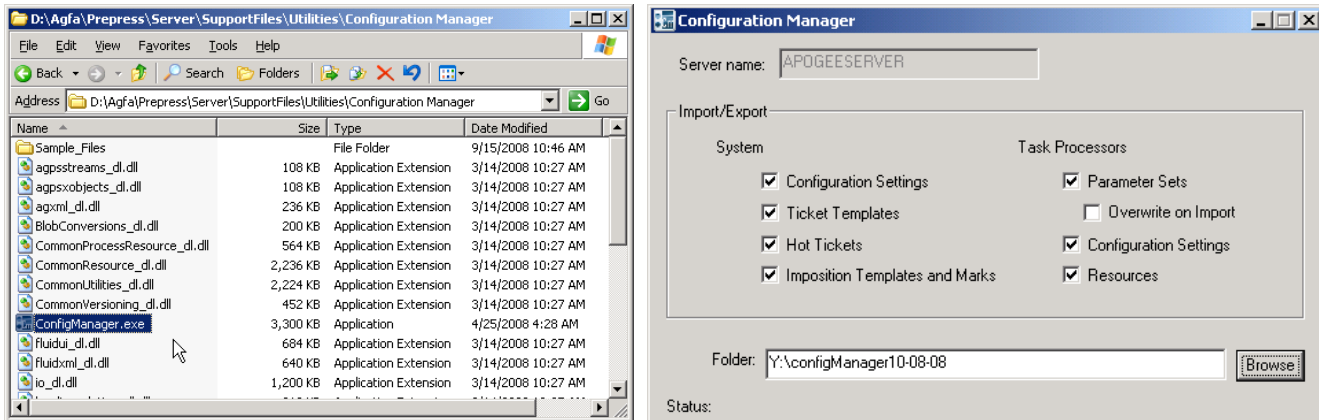
Configuration Manager:

Back-up Apogee Prepress settings

Restore all with Configuration Manager

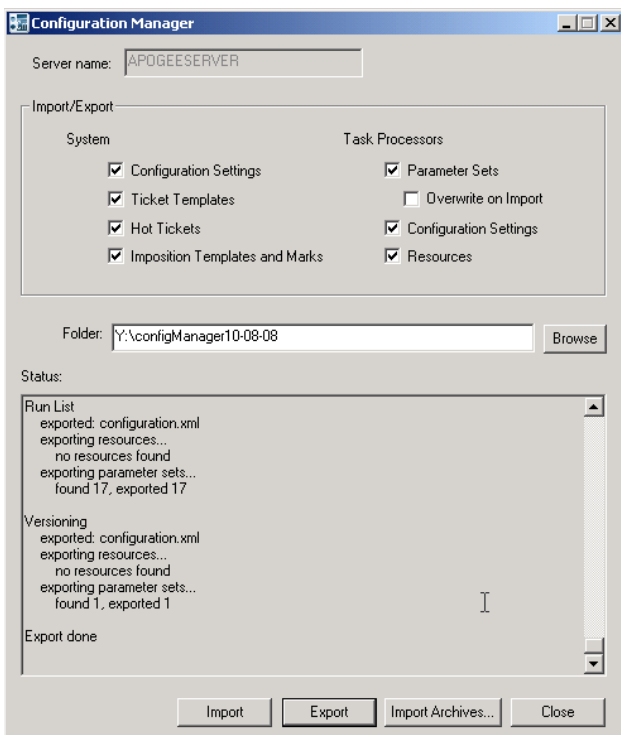
To start the Configuration Manager application, browse to the Support Files folder on Apogee Prepress and look inside Utilities>Configuration Manager and find Configmanager.exe. Launch Configmanager.exe. To restore all, leave all the boxes checked. To restore a single category, uncheck the rest.

Danger! This procedure will restore Apogee Prepress parameters to an older version. For safety, run Configuration Manager before doing this in case new settings are lost.



Click on the Browse button and navigate to a location where you have saved the settings.

Click Import.



When the settings have been imported, close Configuration Manager.