



Digital Film Manager

Using Digital Film Manager and Digital Film Proof

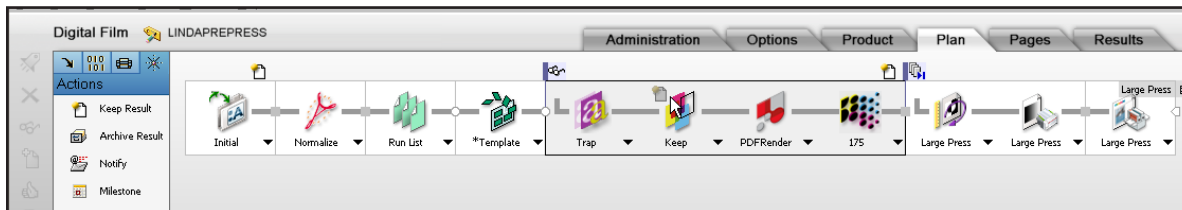
Digital Film Manager/Digital Film Proof is an optional bundle that is required for raster remakes and ROOM (Render once output many) proofing workflows.

Audience: Customer, Technical

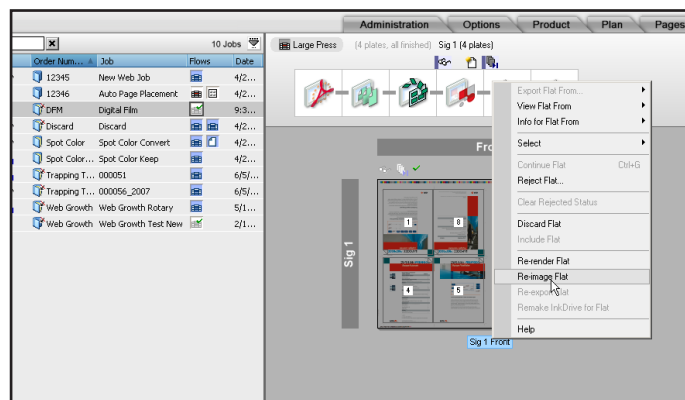
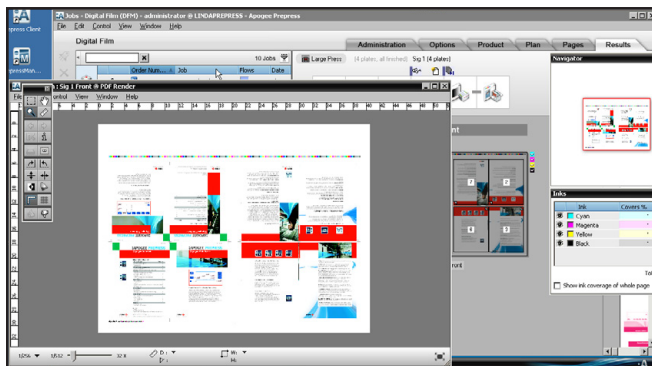
Product: Apogee X, Apogee Prepress: Control, Manage and Automate; Platemaker, Platemaker LE

Using Digital Film Manager

Digital Film Management allows Apogee Prepress to store, view, and re-image raster data. Placing a Keep Results Action above the PDFRender Task Process allows raster remakes. After rendering and continuing to the output device, flats may still be viewed in Raster Preview and output again without re-rendering the data.



Note: keeping raster data on Prepress requires a large amount of disk space!

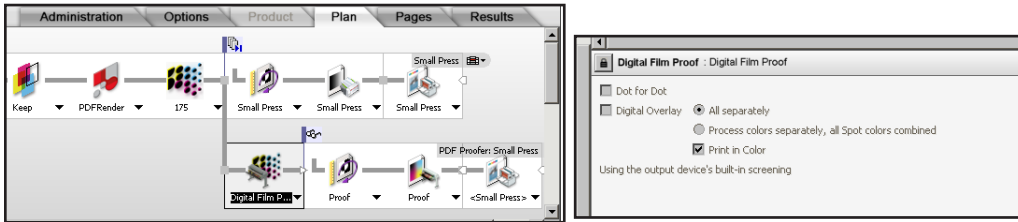


The choice to re-image flats (without re-rendering) is available when the Keep Results Action is added to the PDFRender TP.

Using Digital Film Proof

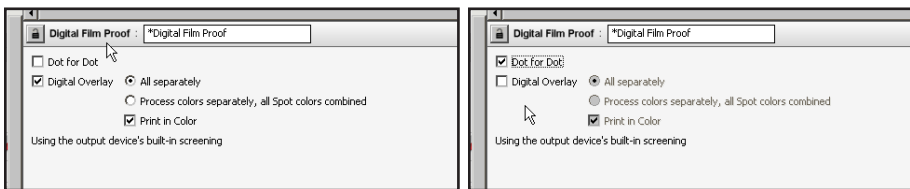
Digital Film Proof downsamples and de-screens rendered data for proofing. It has built-in anti-aliasing for smoothing edges while de-screening curves and lines. Digital Film Proof allows files to be sent to a proofer without re-rendering. It is required for proofing versioning jobs and creating optional dot proofs. Digital Film Proof requires a Hardcopy Proof license.

Note: The Proofer output device should be installed on the same platform as Digital Film Proof.



To use Digital Film Proof, add the Digital Film Proof Task Process in place of the PDFRender Task Process in the proofing flow. The default settings are correct.

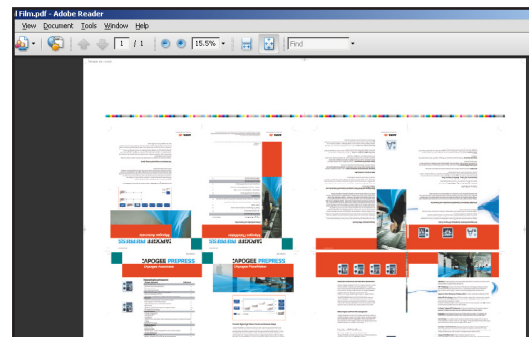
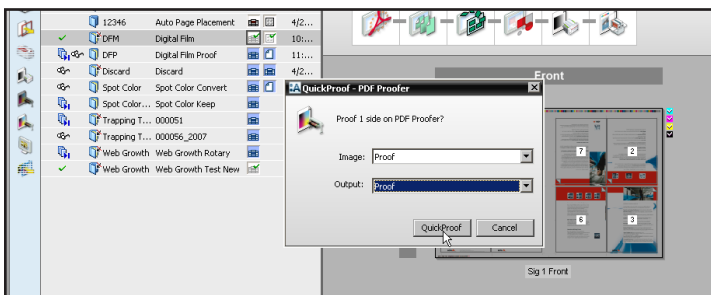
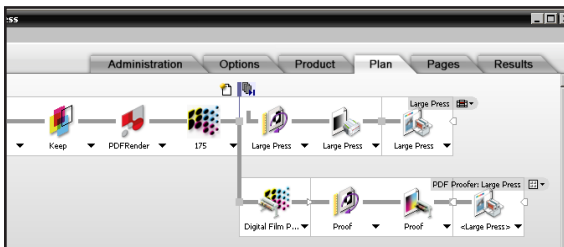
Digital Film Proof also includes Digital Overlay, also referred to as color keys – the creation of one color per proof sheet - that can be combined as comps or used to check overprints, knockouts, and traps.



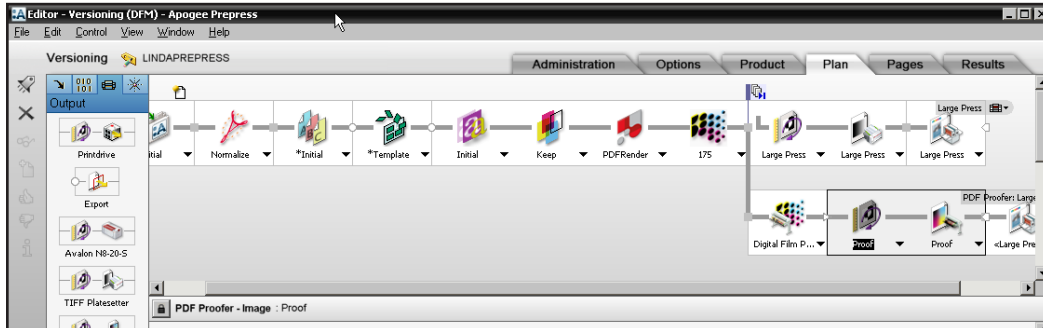
Dot for Dot is used only with the SherpaDot option which produces halftone screened proofs. SherpaDot includes Digital Film Proof, requires an Agfa Graphics proofing device, and requires Color Expert services to set up and calibrate dot proofing.

Quick-Proof from Results Tab

A new feature was added to Prepress 6 called Quick Proof. Quick Proof supports dragging a page onto a proofer to create an instant proof. When Digital Film Management is used in a plan, a raster page or flat from the Results view may be dragged and dropped onto a proofing device to generate a QuickProof job from Results. An imposed flat is sent to the proofer.



Although versioning is standard with Prepress Manage and Automate, Digital Film Management and Hardcopy Proof are required to proof versioning jobs.



Use the Digital Film Proof TP in the versioning flow to output the proofs. This allows Prepress to resolve all the version content and produce proofs for the individual versions.