



InkDrive for Apogee Prepress

Using InkDrive in Prepress Workflow

InkDrive is an optional enhancer for the Press and Generic Press TPs in Apogee Prepress. InkDrive allows you to create CIP3/CIP4 data (PPF files) for the press to preset the ink keys.

Audience: Customer, Technical

Product: Apogee X, Apogee Prepress

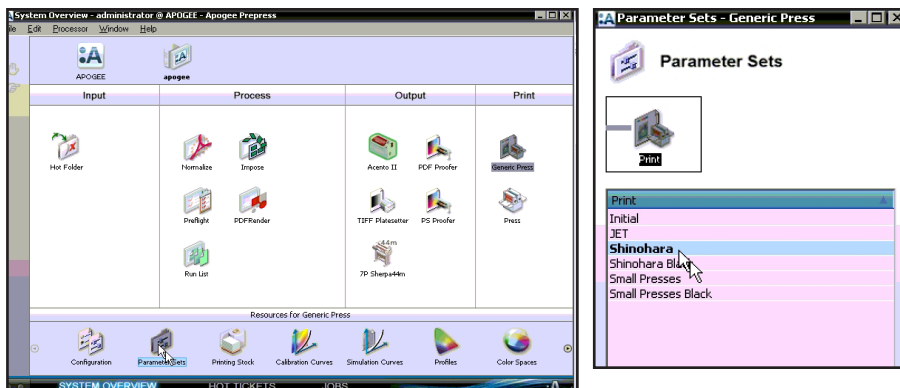
Requirements

InkDrive is an optional enhancer for the Press and Generic Press TPs in Apogee Prepress. InkDrive allows you to create CIP3/CIP4 data (PPF files) for the press to preset the ink keys.

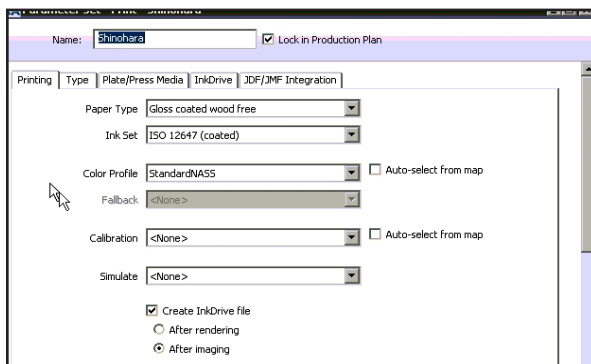
To use InkDrive, you need a license on Apogee Prepress and the appropriate press console interface for your press.

Add InkDrive to a Parameter Set

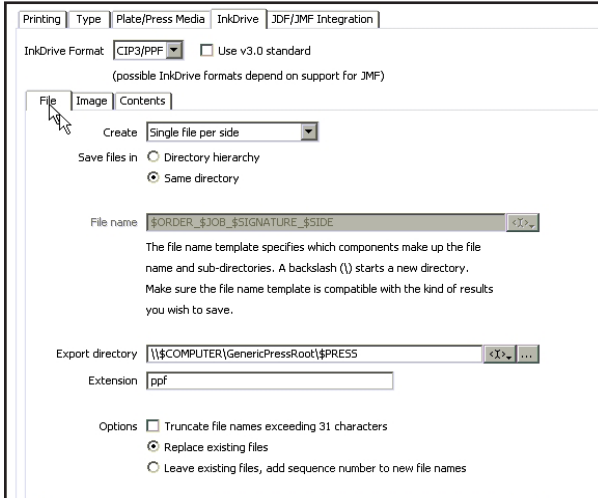
To configure InkDrive, go to System Overview and open parameter sets for Generic Press. Open the parameter set for the press that will be using InkDrive data.



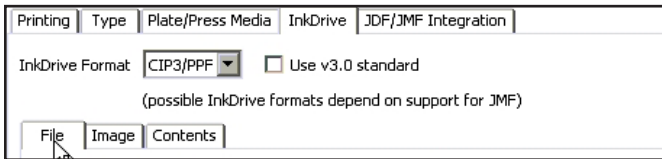
Enable InkDrive at the bottom of the Printing (first) tab in the parameter set. InkDrive can be set to generate data after rendering or after imaging. Set this to after imaging. It can be changed within individual jobs if necessary.



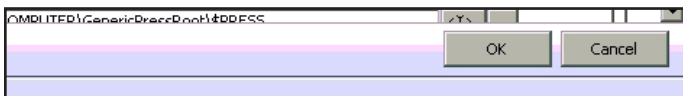
Click on the InkDrive tab of the Generic Press parameter, and choose the File tab. Set the ink data to create as “single file per side.” Usually this is correct. This will be verified when speaking with the press department.



Leave the Export directory at the default for now. This can be changed later if necessary. Choose Replace Existing Files as the default behavior. This will help ensure that the correct data is present if a remake is necessary.



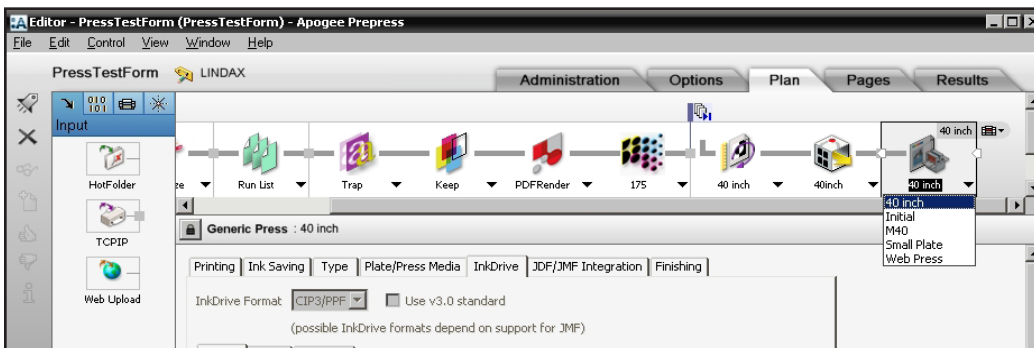
Leave the Image and Content settings at defaults also.



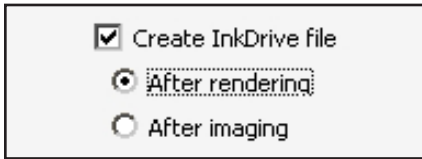
Click OK to save the parameter set.

Create ink data (PPF file) in a job

Edit an existing job or create a new one and change the Generic Press to the new parameter set.

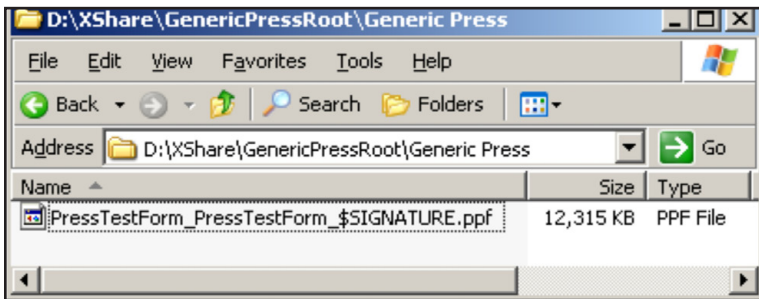


Change the InkDrive setting to create after rendering so it will send the ink file without making plates for this test.



Submit the changes and re-render a flat if necessary. Wait for one side to render.

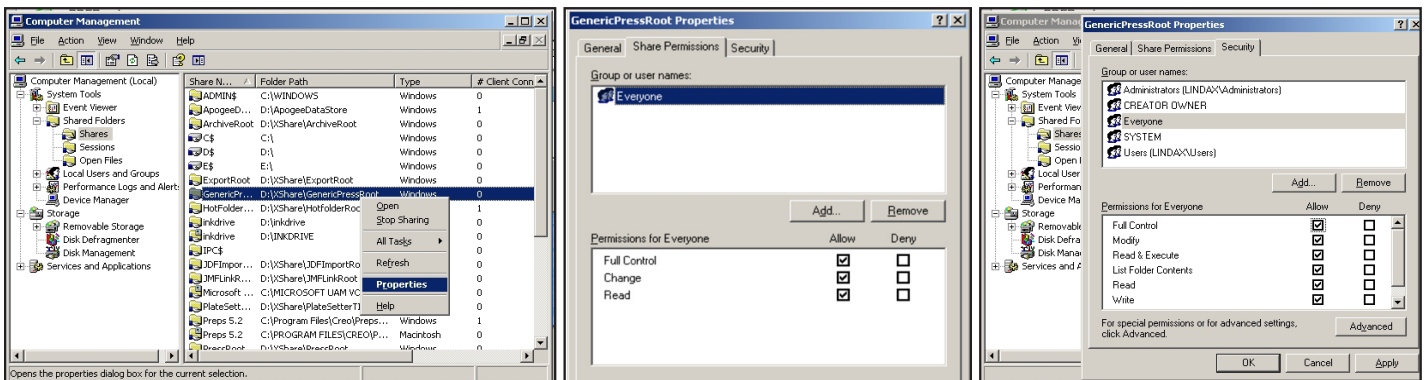
Navigate to the shared folder for Generic Press. Typically this is E:\ApogeeXShare\GenericPressRoot\GenericPress or something similar.



Open the folder and look for a PPF file with today's date and time. Verify that a file has been created.

Check share permissions

Before trying to view the PPF file from the press console interface, check the share permissions of the volume inside Windows Computer Manager on Apogee. Add Everyone as a security user and give Everyone full control.



Check ink file within press software

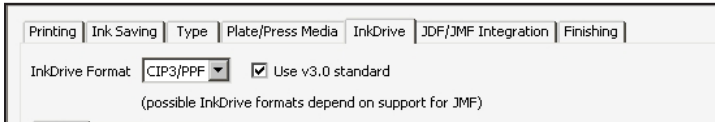
Go to the workstation where the InkDrive files will be opened. Navigate to the shared network drive for GenericPressRoot. Try to open and view the InkDrive data from within the console application. Discuss the parameters with the press operator or person(s) who will be using the InkDrive data.

Questions for press console configuration

Is the remote workstation able to see the shared volume and open the PPF files from Apogee Prepress?

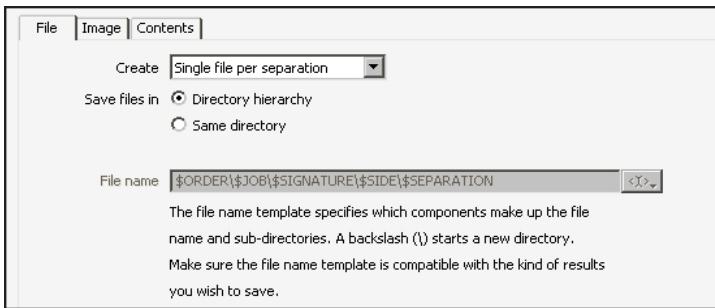
If the console cannot see the shared volume there may be network issues to resolve.

If the console software is older, the files may not be readable. In this case “use v3.0 Standard” may be needed.



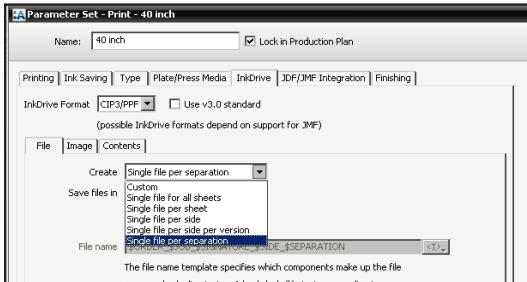
Is the folder structure correct?

If the console software needs to see files in a sub-folder, this can be enabled. A directory hierarchy can be added.



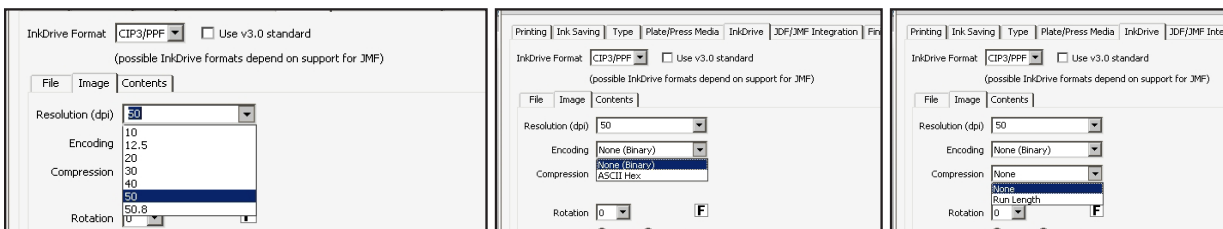
Is “single file per side” correct?

Choose the appropriate setting in the Parameter Set if necessary.



Are the Resolution, Encoding and Compression correct?

Are there recommendations from the console manufacturer? Choose settings from the press manufacturer, if supplied.



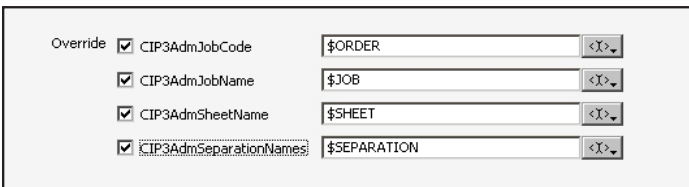
Is the orientation and polarity correct?

Change these settings to match the requirements of the console software.



Is the naming convention correct for the console software?

Occasionally, on older consoles, files may hang because an expected naming convention is needed. In this case, specific job fields can be used to name the file. The best way to determine this is by copying an old PPF from the console and viewing it as a text file. Compare the text to a PPF generated by Apogee Prepress.

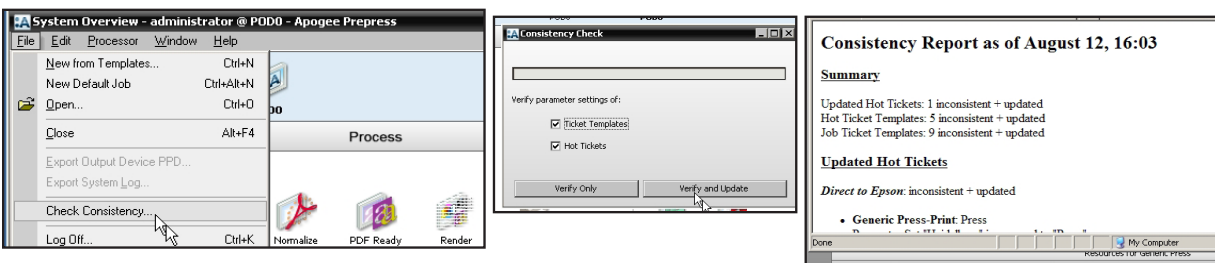


Verification

After testing and discussing the press console requirements, change the necessary settings in the parameter set and generate another test PPF. Check that the parameters are creating the desired file. Save all changes to the Parameter Set.

Update the Ticket Templates

All Hot Tickets and Job Tickets for the press with the modified parameter set need to be updated. This can be done manually or by using Check Consistency. Choose Check Consistency from the File menu. Click on Verify and Update.



A report is generated to indicate the parameters were changed in the tickets.

Note: Parameter Sets must remain locked to be updated with Check Consistency.