



Press Repurposing:

Applying a customer-supplied profile to an existing job

Press Repurposing may be used to apply a customer-supplied profile to a workflow within Apogee Prepress to deliver proof and press results that match the supplied proof. This is far more efficient than modifying images or creating a special press gain curve.

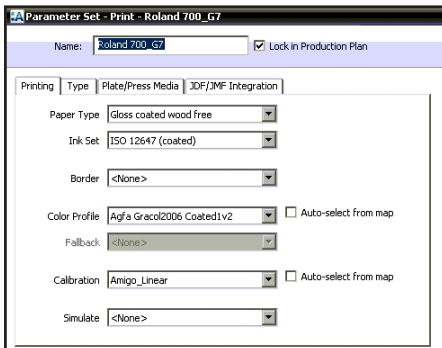
Audience: Customer, Technical

Product: Apogee Prepress, ColorTune

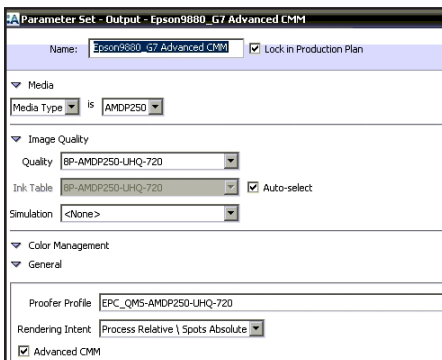
Press Repurposing requires a ColorTune license on Apogee Prepress.

Press Repurposing converts between two CMYK profiles using Prepress' built-in intelligence for maintaining the black channel and achieving a very good color match while delivering the required appearance of the new profile.

In this example, the press parameters and proofer parameters are set up for certified proofing.

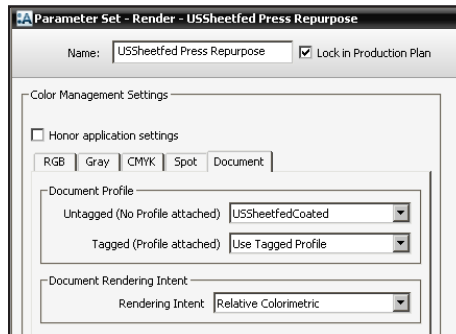


The press is using the Gracol standard and the proofer is using a QMS-created proofer profile.

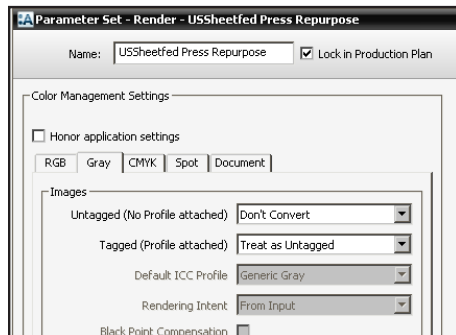


This delivers certified Gracol results but the customer sends proofs with a different (in this case USSheetfed Coated) profile that they want to match on press and on the proof from Prepress.

To modify the proof and plate to match a different targeted profile (USSheetfed Coated) select that profile in the Document tab of the PDFRender TP.



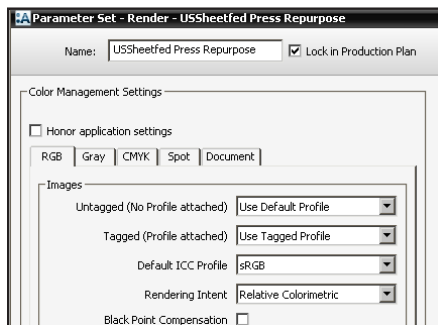
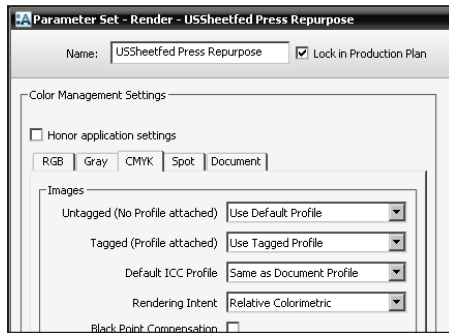
Use Tagged Profile in the Document, CMYK and RGB tabs and set Gray to "Treat as Untagged."



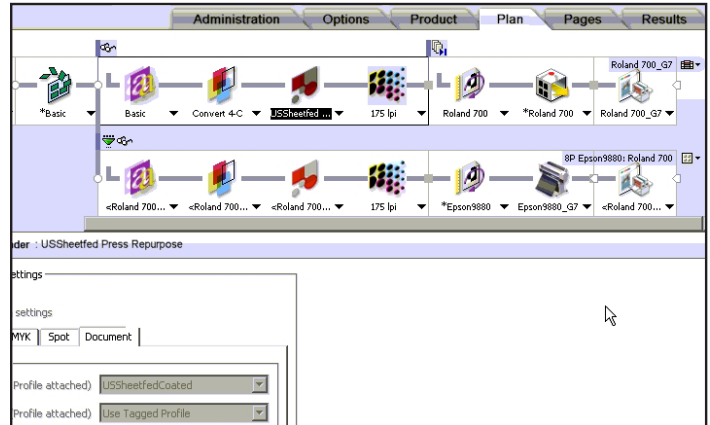
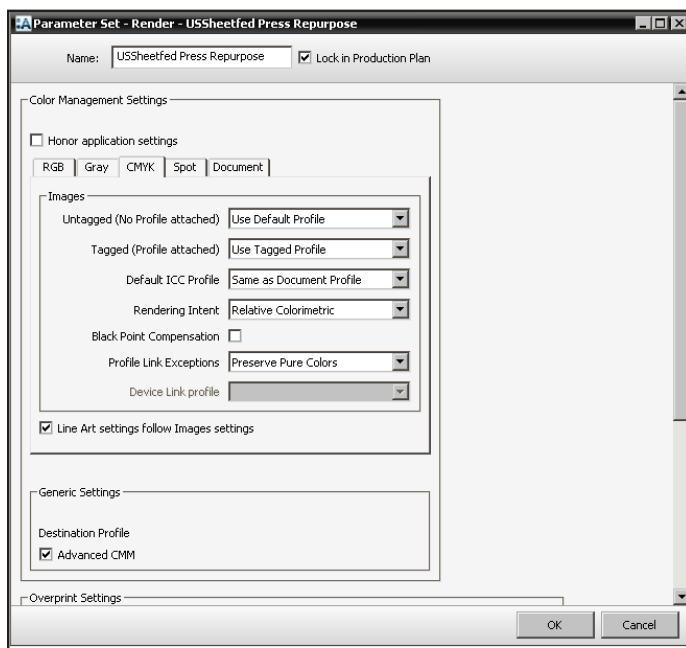
Press Repurposing:

Applying a customer-supplied profile to a job

Ensure that the Default ICC Profile in the CMYK tab is set to “Same as Document Profile.”



Be certain that the CMYK tab has the setting for Profile Link Exceptions set to “Preserve Pure Colors.”



Create a Press Repurposing parameter set for the PDFRender settings if desired.

Print the proof and compare it to a standard proof from Prepress. The Press Repurposed proof should match the supplied ICC profile without drastically changing anything else about the job.

The plates will deliver the proofed results without the need for a special press calibration for the single job.