

Print 09
Apogee Users Group



Tips & Tricks: Getting the Most from :Apogee 6.0



Welcome :Apogee Users!

- **Workflow Possibilities**

- **Cool :Apogee 6.0 Features We Love**

- PageMaster, PageMaster, PageMaster
 - GDI Proofing & QuickProof
 - Creating Parameter Sets On-the-Fly

- **Things That Get Overlooked**

- Discard Enhancements: Flexible & Intuitive
 - Apogee Preflight: Transparency Flattener for Digital Press Output
 - Run List Enhancements: Placing Spreads & Visualization
 - Microsoft Office: Automatic Black Conversion
 - Black + Spot Jobs: Look Ma, No Preflight Actions!

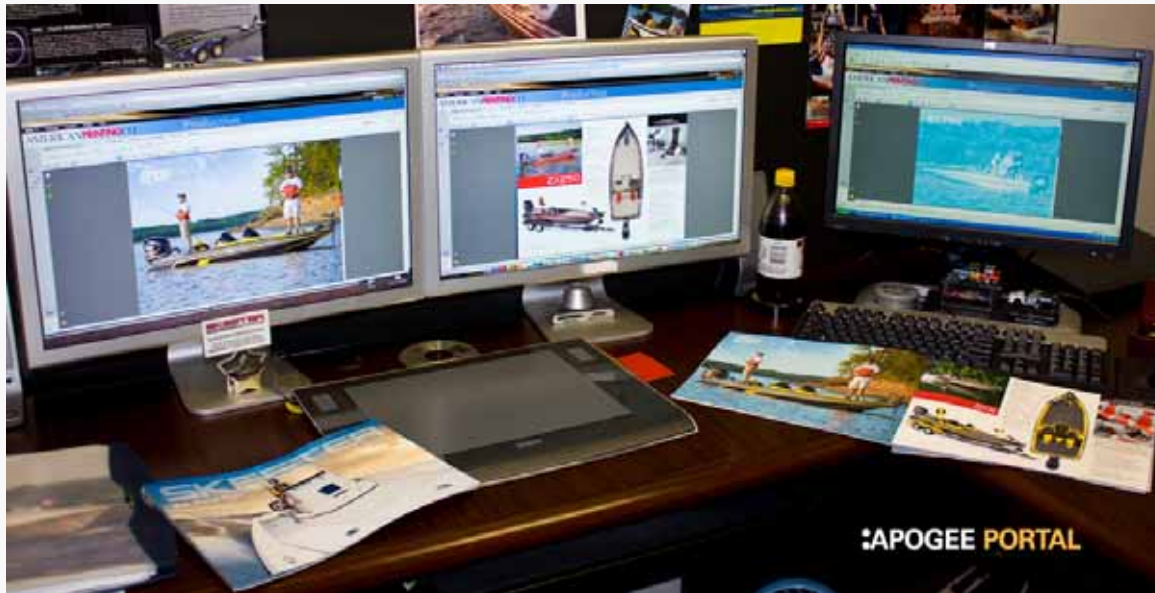
- **Ask Questions!**

Have You Upgraded to 6.0 Yet?

- **If You Have a Technology Contract and Workflow Support Contract....**
 - Upgrades are well underway
- **Benefit from the Latest Technology**
 - Agfa driven technology enhancements
 - Adobe driven technology enhancements
- **On-line Education Available Free of Charge**
 - At www.academyextras.com
 - Consider purchasing on-site Workflow Assessment in conjunction with your upgrade!

Last Year We Said....

- **:Portal WebApproval is An Option You Should Have**
 - Your customers can approve rendered pages
 - Your customers can upload content directly to your :Apogee Prepress job
 - YOU control customer access
 - Customer cannot “change” your job plan



Now Let's Explore PageMaster

- **User Interface**
 - Easy Visualization & Navigation
 - Customers only see what they need to see
- **Useful Features**
 - Customer: Filter Pages by Status
 - Customer: Deadlines Posted in Job View
 - Customer: Drag & Drop Interface
 - You: Customer Remarks in Raster Preview
 - You: Customer Remarks in Job Log/Message Board
 - Download the :Portal PageMaster QuickStart Guide from www.academyextras.com (under the Useful Tools section!)

Exploring PageMaster

- Let's Look at What We've Just Talked About!



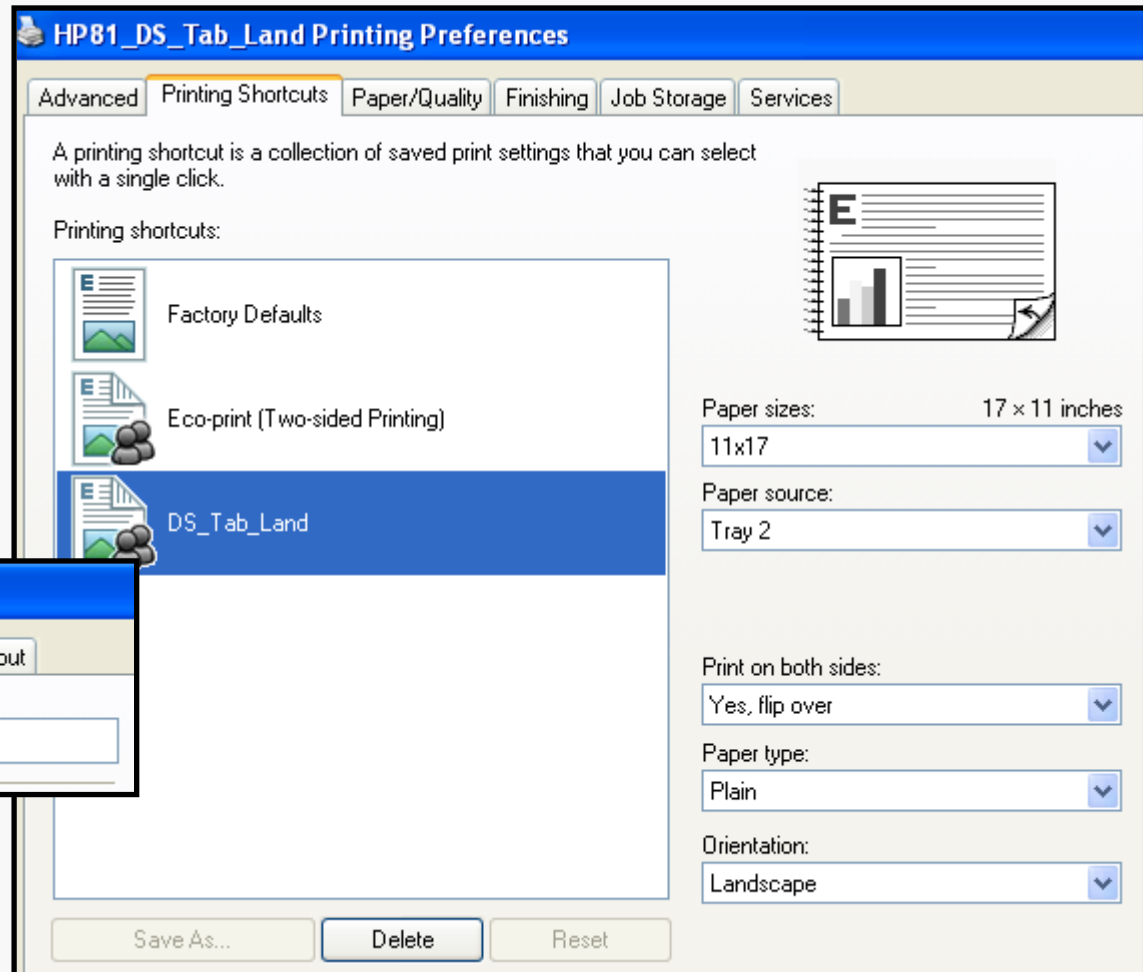
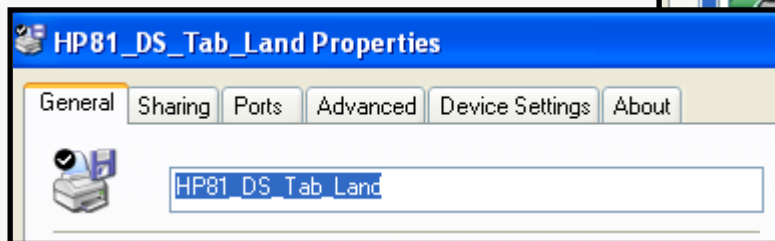
Have the HardCopy Proofing Option?

- **Awesome Expanded Functionality**
 - **GDI Proofing**
 - Separate Task Processor
 - Uses Windows Graphical Device Interface (GDI)
 - Creates MUCH Smaller Files than PSProofer or PDFProofer TPs
 - Can Utilize the Printer's Advanced Functionality
 - **QuickProof**
 - Drag/Drop Page, Imposition, Rendered Flat
- **Let's Take a Look!**



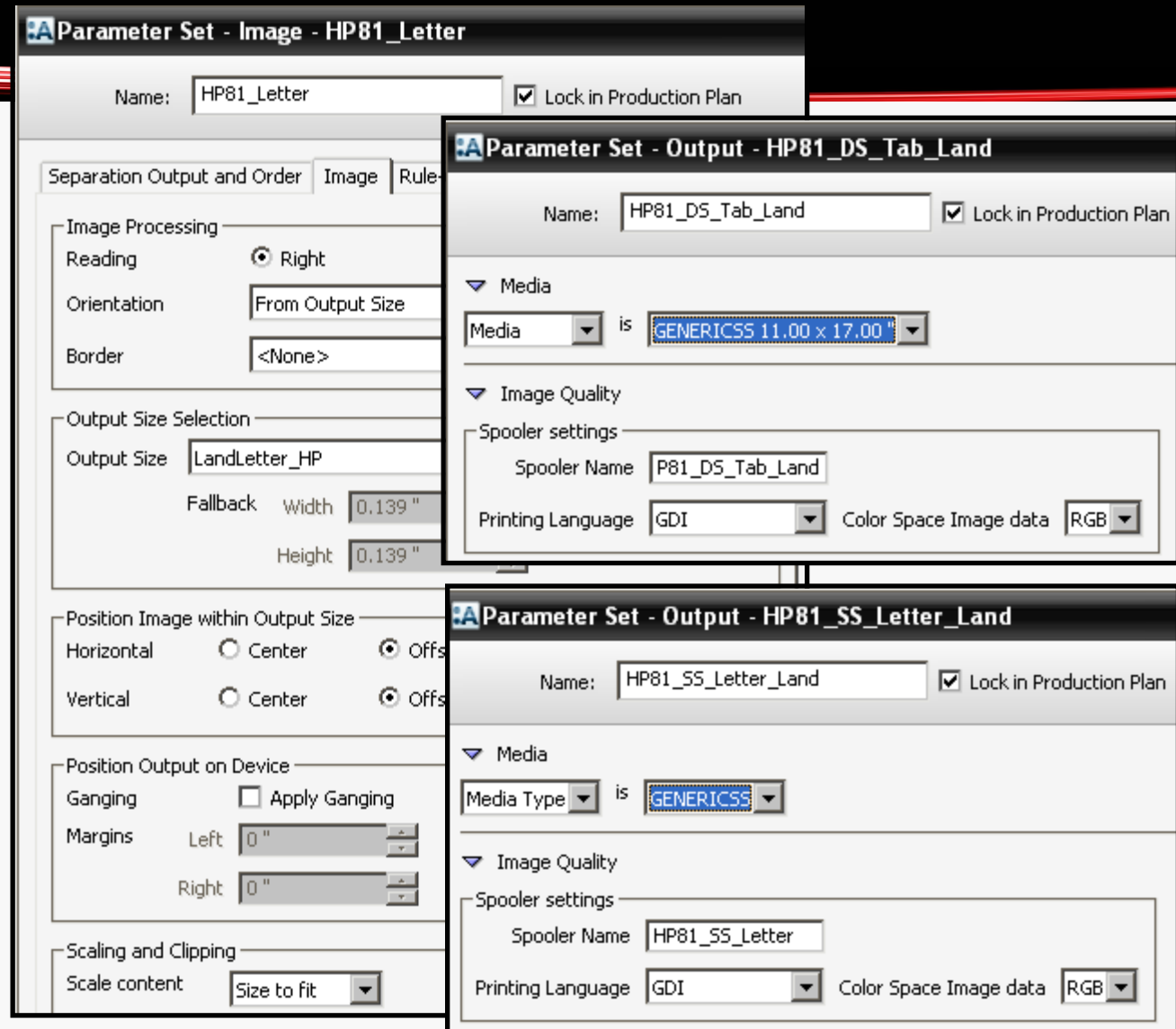
GDI Recap

1. Create a Windows print spooler on the Prepress server (or satellite).
2. Configure the print spooler for unique print options, if necessary.
3. Note the printer's name – it's required for creating an output parameter set.



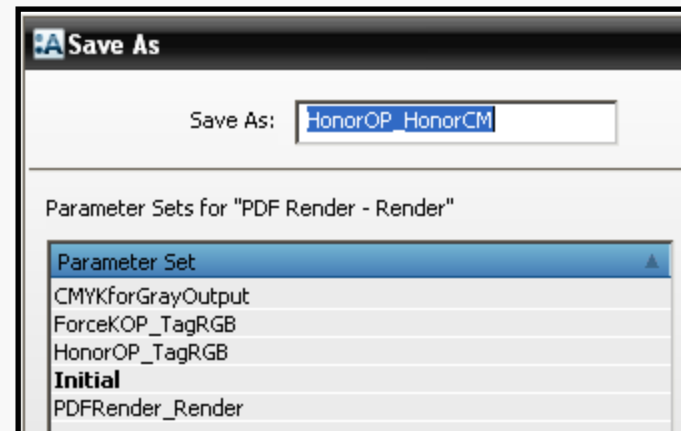
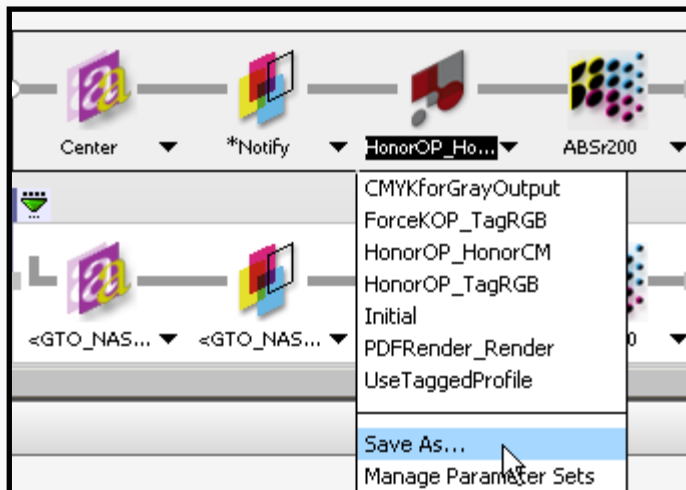
GDI Recap

4. Select the GDI task processor.
5. Add Media, based on the paper you use. You may need to create both portrait and landscape dimensions.
6. Create output sizes. Take the printer's hard margins into account.
7. Create Image parameter set(s). Select **Size to fit** if necessary.
8. Create Output parameter sets. Use the name of the **Windows printer** for the **Spooler Name**.
9. Test and adjust as necessary.



Parameter Sets On-the-Fly

- **Manage Your Parameter Sets**
 - The Way You Always Have
 - From **Within** a Job
 - Can Add New or Edit Existing Sets
 - When You Build Within a Job, Parameter Set is **Unlocked**
- **Let's Take a Look!**



Discard Filter Enhancements

- **Best Used to Manage Output**
 - **One Job, Multiple Print Needs**
 - Traditional Press(s)
 - Digital Press(s)
 - Contract Proofs
 - In-house Proofs
 - Digital Finals
- **More Intuitive Interface**
 - **No More Guessing In Range? Not In Range?**
 - **Quick Peek:**

Discard Filter Selections

The first screenshot shows the 'Include' dropdown menu open with 'Include' selected. The second screenshot shows the 'All results' dropdown menu open with 'All results' selected. The third screenshot shows the 'With initial content' dropdown menu open with 'With initial content' selected.

1. Select either Discard or Include.
2. Select WHAT to Discard or Include.
3. Select WHEN to Discard or Include.
4. When selecting a Range, provide the details in the Index Range box.

The 'Results in range' dropdown is selected. Below it is the 'Index Range' box with a list of options:

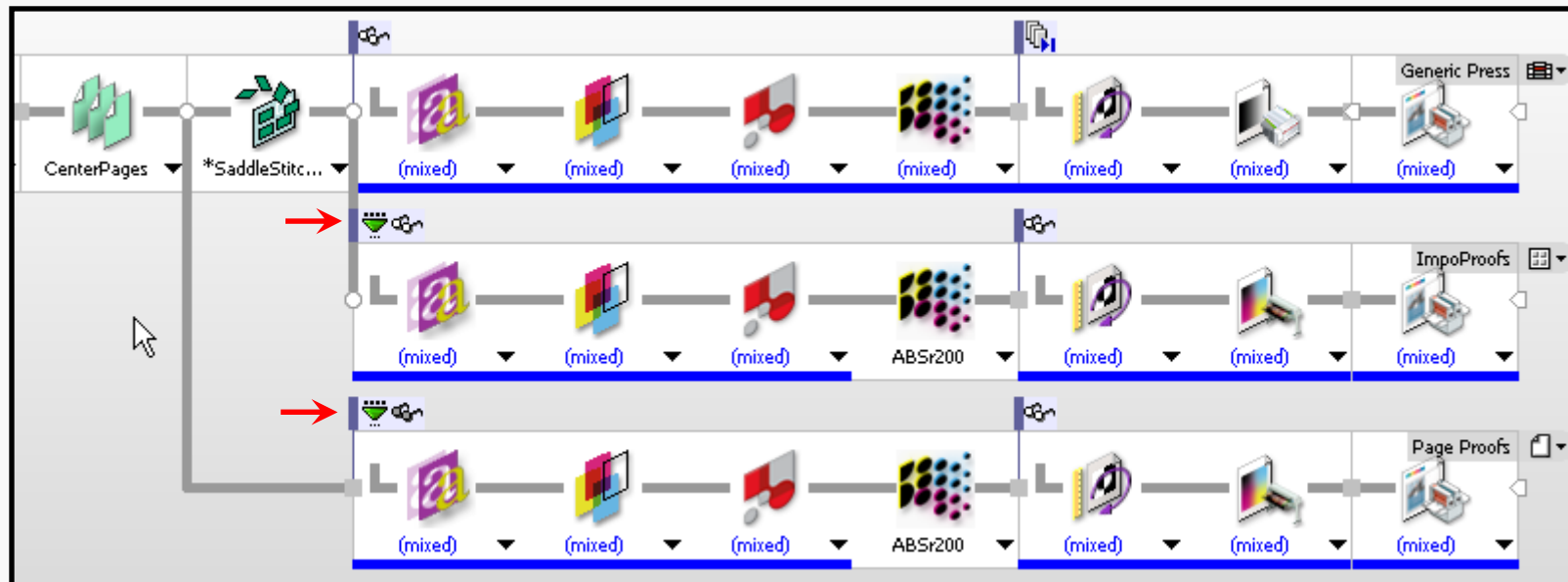
- 2 Sheet or page 2
- 1,3 Sheets or pages 1 and 3
- 1-3 Sheets or pages 1 through 3
- 1,5-7 Sheets or pages 1 and 5 through 7

Numbers refer to sheets or pages, depending on the position of the Discard action.

- 1F,3B The front of sheet 1 and the back of sheet 3
- 2W1F The front of the first web of sheet 2
- 1F-3F Sheets 1 through 2 and the front of sheet 3

To get only the front sides of sheets 1, 2 and 3 use 1F, 2F, 3F

Discard Filter In a Job Plan

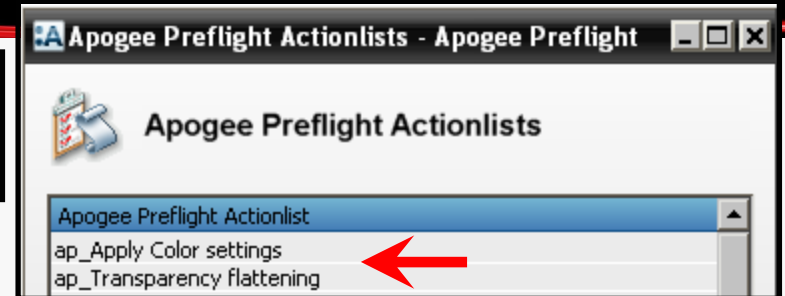


- In the plan above, Multipart is being used to deliver content to two different plate sizes. Discard is being used in the proofing flows.
- Imposed proofs will be generated on initial content, but not changes.
- Page proofs will be generated only when pages are replaced or updated.

:Apogee Preflight - NEW

- **Additional Task Processor**

- Does not replace Preflight TP
- Can be combined with Preflight
- Works like Preflight, i.e., Actions and Profiles
 - Except it changes the file instead of tagging (color handling)
 - Actions/Profiles are STATIC
 - Built on Agfa's experience with PostScript, RIPping, PDF handling
- Report appearance is customizable








- **Two Actions You HAVE to Know About**

- **Transparency Flattening** – If you send PDFs to a digital press, you can use this to accurately remove transparency from the file.
- **Apply Color Settings** – This transforms the file based on the selected Output Profile and spot color handling values from the PDFRenderer.

:Apogee Preflight Transparency Action Results

- Preflight Results **BEFORE** using Transparency Flattening Action:

**Warnings**

-  Objects with transparency settings have been found (2x on pages 1,24)
-  Objects with transparency settings have been found (600x on pages 1-2,4-24)
-  Objects with transparency settings have been found (29x on pages 4-11,13-15,17-20)
-  Page has no blending color space (1x on page 24)

- Preflight Results **AFTER** using Transparency Flattening Action:



**Warnings**

-  ICC based is used (2071x on pages 1-2,4-24)

Run List Enhancements

- **Color Coded Pages**
 - When Using Multipart Plans (Mark showed this!)
- **Placing Spreads with Naming Conventions**
 - No Need for Page Offsets

Run List – Color Coded Page List

Part
 Cover
 Body

When you use a Multipart Plan:

1. Assign a color to each part.
2. In the Pages tab, filter the list to show all Parts or a specific Part.
3. If you manually place pages, drag pages into the appropriate slots.
4. Using Multipart for saddle stitched jobs makes placing cover matter simple!

Run List	24	...	All Parts	Cove	Body	
	Adj	≠	#	Page	Rev	Sig
	+		1	☒	1F	
	+		2	☒	1F	
	+		3	☒	2F	
	+		4	☒	2B	
	+		5	☒	2B	
	+		6	☒	2F	
	+		7	☒	2F	
	+		8	☒	2B	
	+		9	☒	2B	
	+		10	☒	2F	
	+		11	☒	3F	
	+		12	☒	3F	
	+		13	☒	3F	
	+		14	☒	3F	
	+		15	☒	2F	
	+		16	☒	2B	
	+		17	☒	2B	
	+		18	☒	2F	
	+		19	☒	2F	
	+		20	☒	2B	
	+		21	☒	2B	
	+		22	☒	2F	
	+		23	☒	1F	
	+		24	☒	1F	

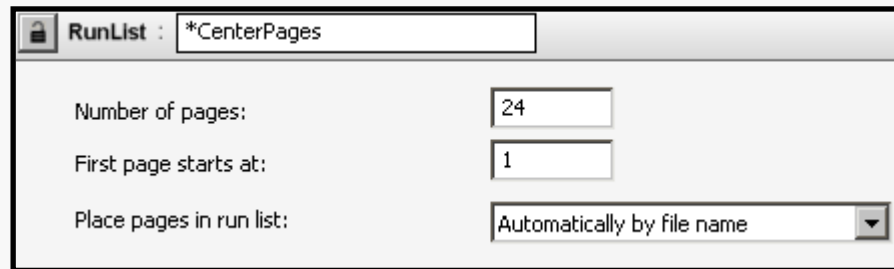
Run List	4	...	All Parts	Cove	Body	
	Adj	≠	#	Page	Rev	Sig
	+		1	☒	1F	
	+		2	☒	1F	
	+		23	☒	1F	
	+		24	☒	1F	

Run List	20	...	All Parts	Cove	Body	
	Adj	≠	#	Page	Rev	Sig
	+		3	☒	2F	
	+		4	☒	2B	
	+		5	☒	2B	
	+		6	☒	2F	
	+		7	☒	2F	
	+		8	☒	2B	
	+		9	☒	2B	
	+		10	☒	2F	
	+		11	☒	3F	
	+		12	☒	3F	
	+		13	☒	3F	
	+		14	☒	3F	
	+		15	☒	2F	
	+		16	☒	2B	
	+		17	☒	2B	
	+		18	☒	2F	
	+		19	☒	2F	
	+		20	☒	2B	
	+		21	☒	2B	
	+		22	☒	2F	

Run List – Working with Spreads

You can add spreads to your jobs using file name conventions.

1. Spread should be 2x the width of the template page.
2. Create an auto page placement rule that reflects the document names.
3. As pages are added and placed in the Run List, Prepress will automatically create the offset value.

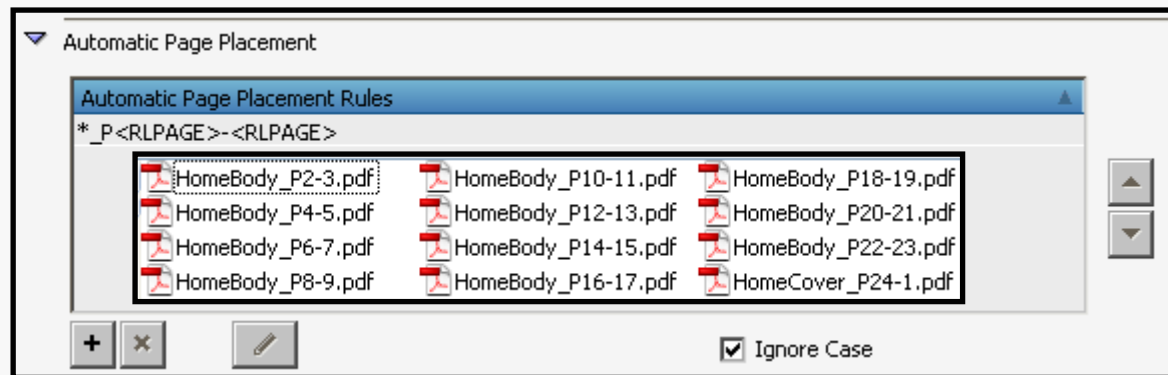


RunList : *CenterPages

Number of pages: 24

First page starts at: 1

Place pages in run list: Automatically by file name



Automatic Page Placement

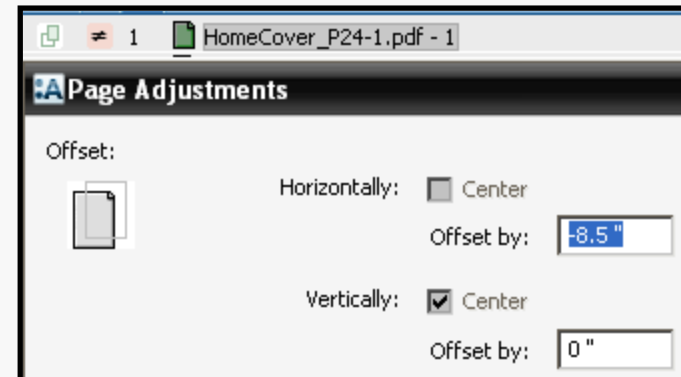
Automatic Page Placement Rules

*_P<RLPAGE>-<RLPAGE>

HomeBody_P2-3.pdf	HomeBody_P10-11.pdf	HomeBody_P18-19.pdf
HomeBody_P4-5.pdf	HomeBody_P12-13.pdf	HomeBody_P20-21.pdf
HomeBody_P6-7.pdf	HomeBody_P14-15.pdf	HomeBody_P22-23.pdf
HomeBody_P8-9.pdf	HomeBody_P16-17.pdf	HomeCover_P24-1.pdf

+ × Ignore Case

1	HomeCover_P24-1.pdf - 1
2	HomeBody_P2-3.pdf - 1
3	HomeBody_P2-3.pdf - 1
4	HomeBody_P4-5.pdf - 1
5	HomeBody_P4-5.pdf - 1



Page Adjustments

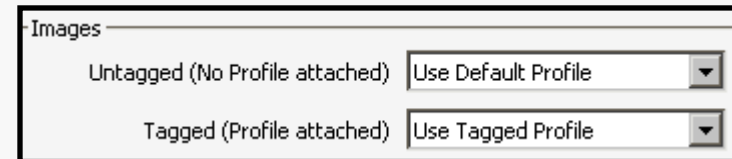
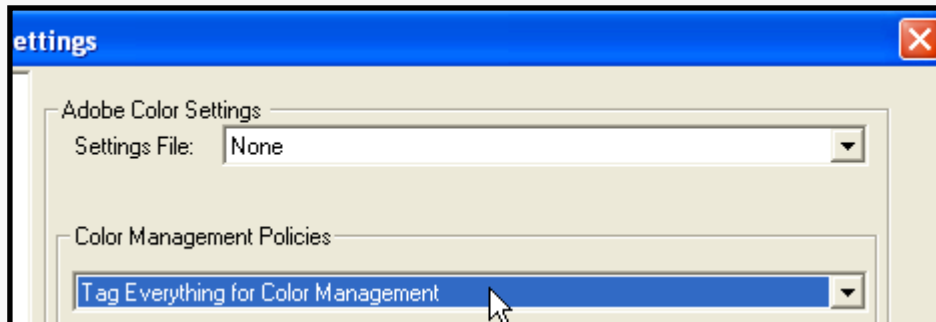
Offset:

Horizontally: Center
Offset by: -8.5"

Vertically: Center
Offset by: 0"

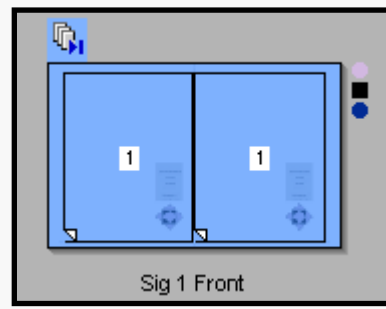
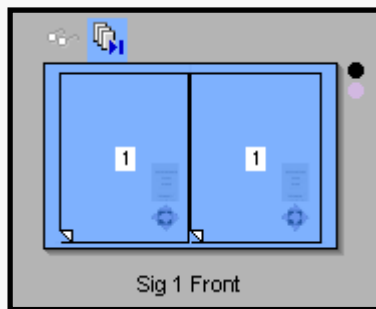
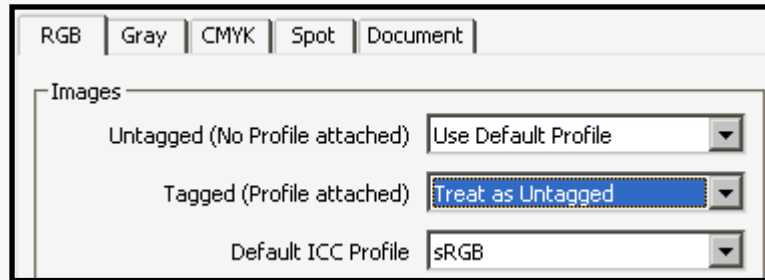
Microsoft Office Black Text Conversion

- **Stop Wincing, Groaning or Rolling Your Eyes!**
 - :Apogee 6.0 automatically converts Black to 100% K
 - No profiles, actions or magic required
 - One specific instance where it doesn't work
 - MS PDF conversion for color management set to "Tag Everything"
 - Prepress PDFRender > Render set to "Use Tagged Profile"



Microsoft Office Black Text Conversion

- So How Does It Work?
 - Set an RGB profile in the PDFRender TP
 - Treat tagged images/text as untagged

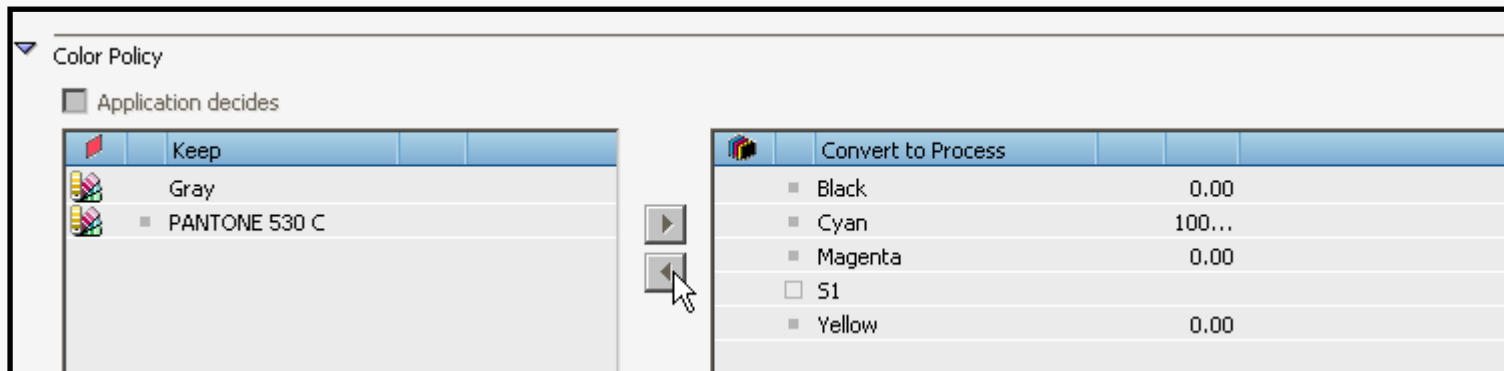
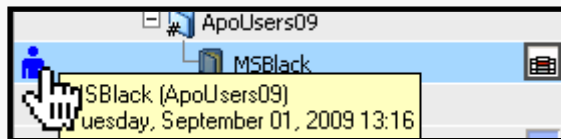
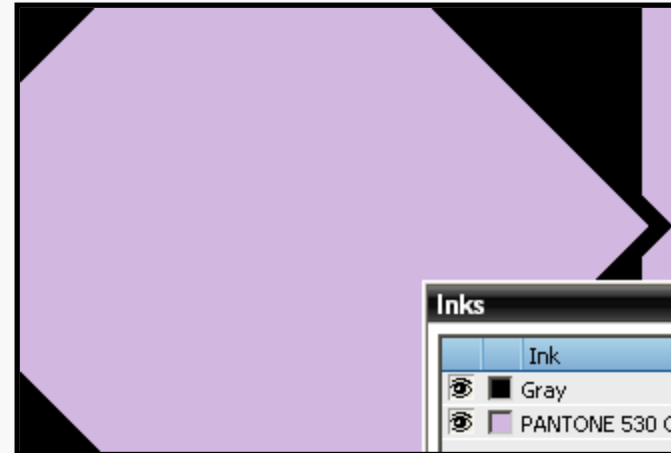
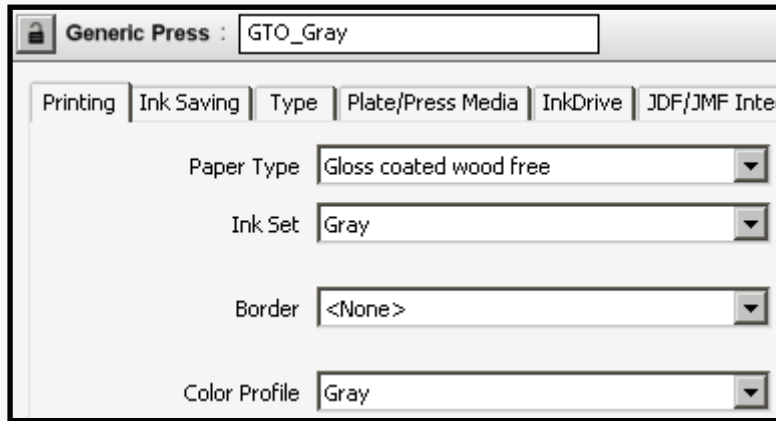


Black + Spot Jobs

- Keep Your Spot, Convert the Rest to Black
 - Set PDFRender spot handling to **Notify**
 - Set Press to **Gray** (Profile + InkSet)
 - When the Blue Man appears:
 - Add the Spot You Want to the Keep Column
 - You Can Even Map Spots to Each Other
 - Continue the Job!



Black + Spot Jobs, continued



Questions?



Thanks for Spending Time with Us Today!

