



QMS Proofer Profile

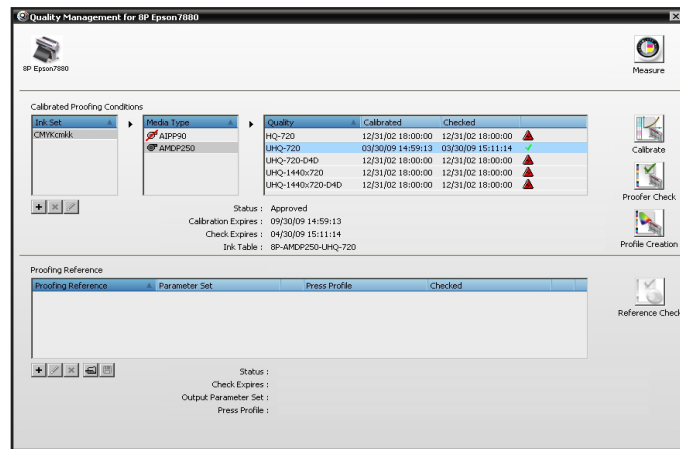
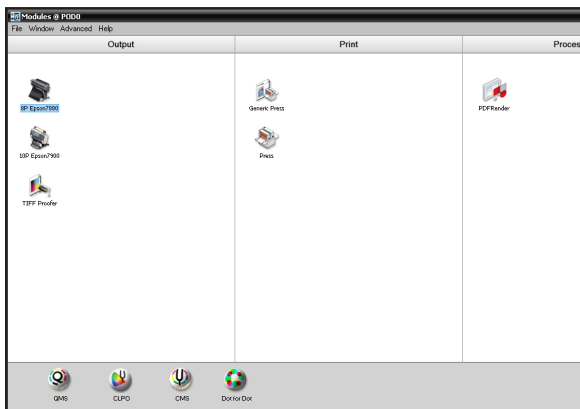
Using QMS to create a Proofer Profile in Apogee Prepress 6

Apogee Prepress 6 allows you to create a proofer profile after completing the calibration of the proofer. This profile can then be added to the workflow to optimize color accuracy.

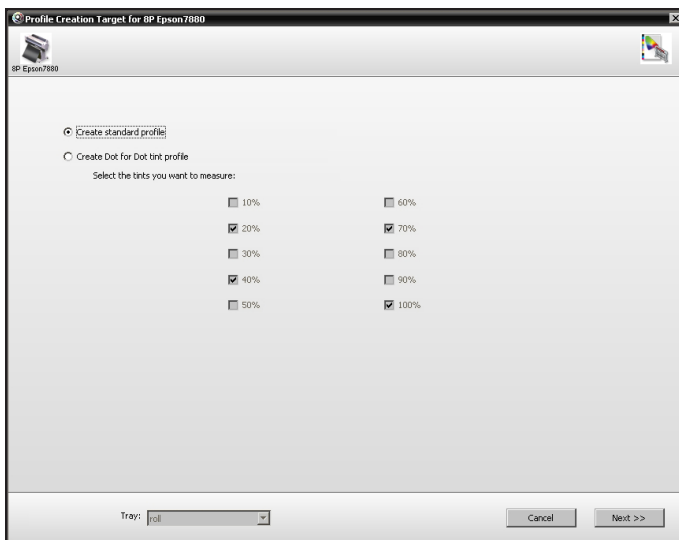
Audience: Customer, Technical

Product: Apogee Prepress 6, Epson x800, x880, x900, HPz3100/3200, (using Xrite EyeOne IO, iSis or DTP70 without x900).

Complete the QMS calibration process first. (See separate documentation on QMS.)



Choose QMS a second time. Choose the same ink, media and quality. Click on Profile Creation.



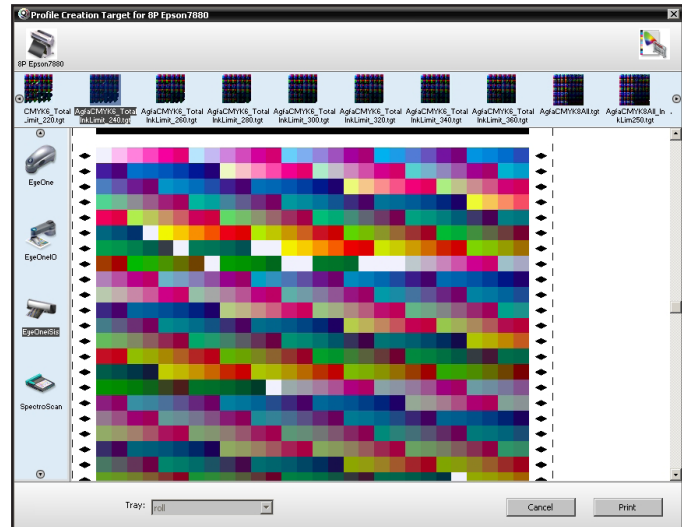
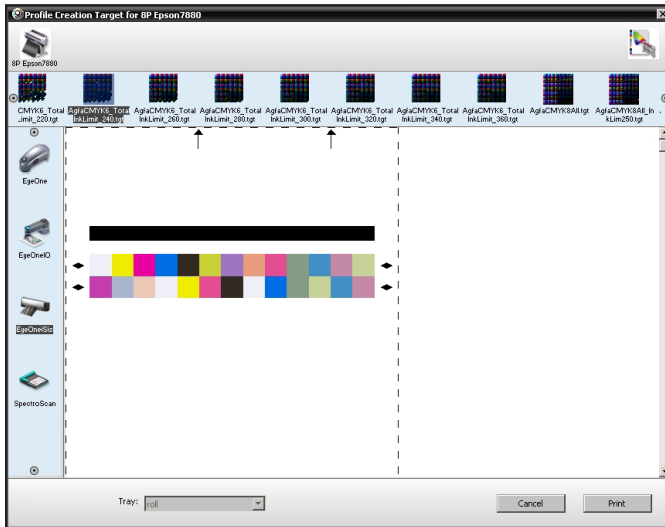
Note: Profile Creation will only be available if a ColorTune license is present on Apogee Prepress.

Click Create Standard Profile. Click Next.

Select the target from the list across the top of the window.

For Epson x800 and x880 series choose the AGFACMYK6_Total_Ink_Limit_240.tgt.

For Epson x900 series choose AGFACMYKOG_Total_Ink_Limit_200.tgt.

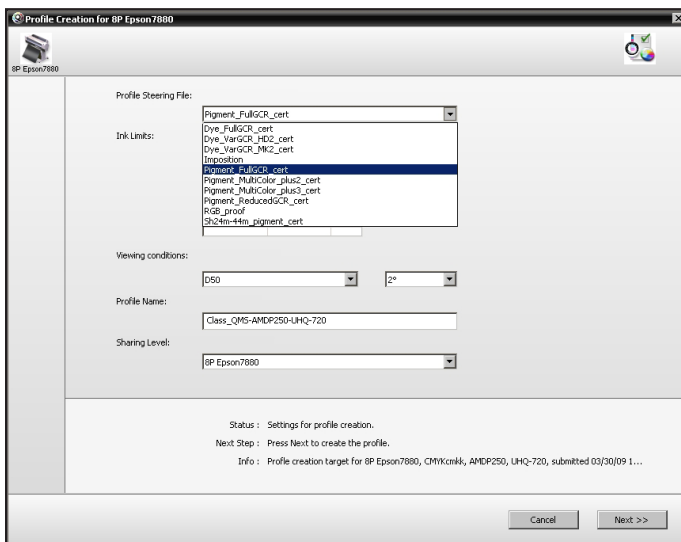


Choose the measurement device along the left side of the window. This exercise requires an automatic measuring device such as the Xrite EyeOne IO, Xrite EyeOne iSis, or Xrite DTP70. With the Epson x900, the target self-measures. For all others click Print and allow the pages to print and dry.

Click Measure. Select the target and reading device again if necessary.



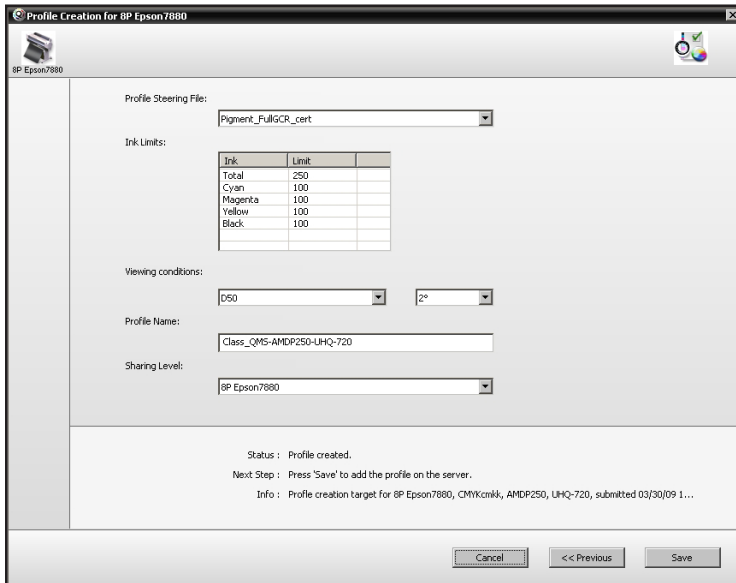
Read the ID strip and click Next. Read the target and click Next.



QMS Proofer Profile

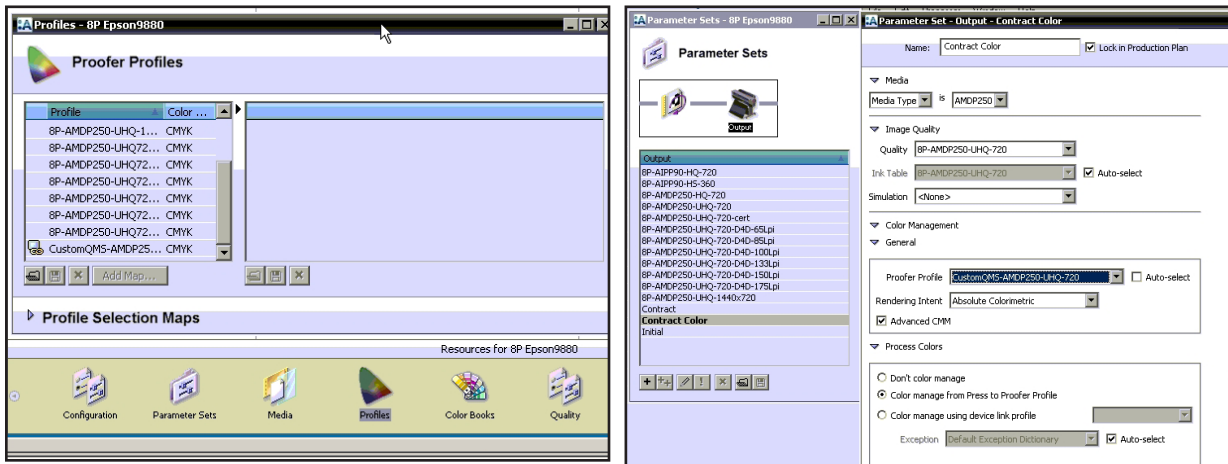
Using QMS to Create Proofer Profile

For all but x900 choose Pigment_FullGCR_cert from the Profile Steering Files list. For Epson x900, choose PigmentMultiPlus2_cert. The Ink Limits should automatically set from the file information.



Choose D50 at 2 degrees for the viewing conditions. Add a prefix to the profile name so it will appear as a separate entry in the profile list. Sharing should indicate the type of printer. Do not change this entry. Click Save.

The proofer profile is automatically imported into Apogee Prepress for the proofer selected.



Choose the new profile in the Parameter Set for the proofer.