



Shutdown Apogee Prepress

Steps to Shutdown Prepress Server

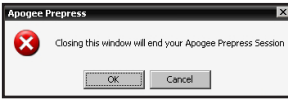
Shutdown procedure for Apogee Prepress Server, Satellites, and Clients.

Audience: Customer, Technical

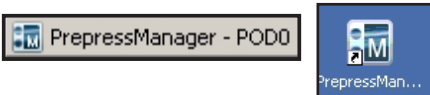
Product: Apogee X, Apogee Prepress

Shutdown Prepress

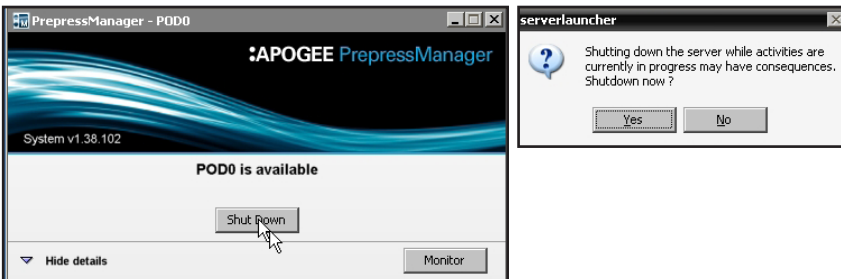
Check to be sure no jobs or tasks are processing through Prepress. Stop all Prepress clients.



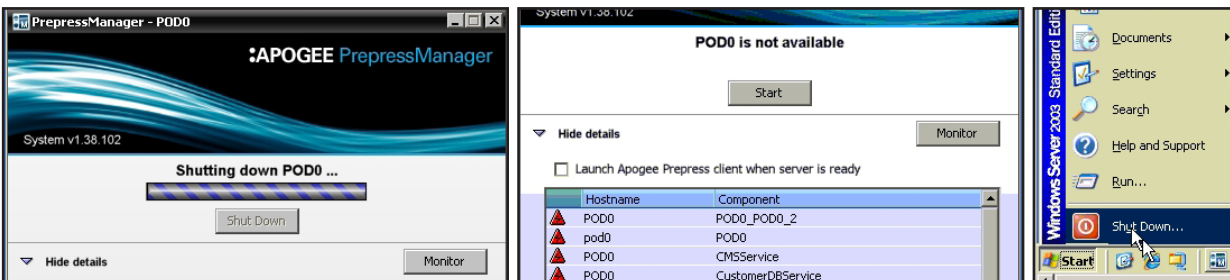
Locate the Prepress Manager application in the task bar. If not found, start the application from the desktop shortcut to see the console window.



Click the Shutdown button in the console to start the shutdown process. Click Yes on the message.



Wait for Prepress to stop. Wait until all the tasks have red triangles and only the console window remains open on the task bar. Exit the console application.



Shut down the Prepress computer.

Prepress Satellites will stop automatically. Shut down the individual computers after shutting down the server.