



## Trim, Gap, or Gutter

Understanding how to edit space between pages in Apogee Impose

*In addition to changing head, tail and face trims, Apogee Impose allows you to select and modify gaps and gutters. This function depends on the type of imposition and pages.*

**Audience:** Customer, Technical

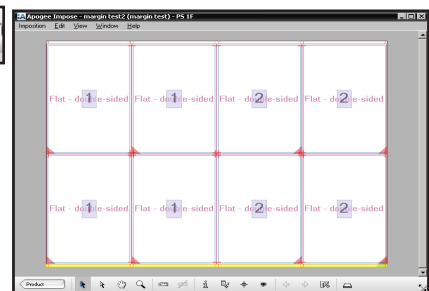
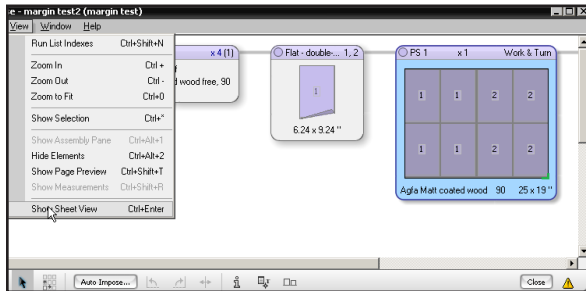
**Product:** Apogee Prepress Impose 7.1 and higher

### Bound Products

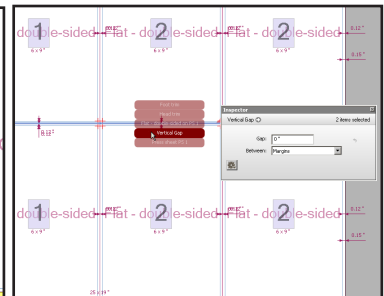
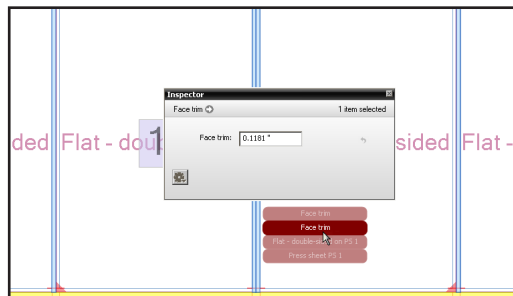
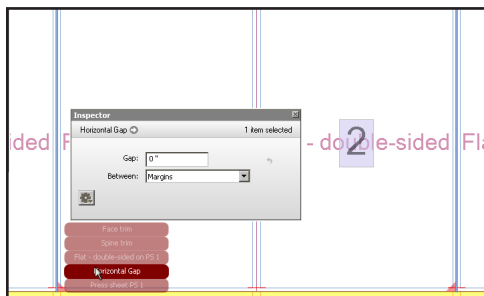
When saddle or perfect binding is selected, the pages must adhere to a uniform size for folding and binding. Only trims are adjustable.

### Unbound Products

When creating unbound products, it is possible to also adjust the space (gap) between trims. In Edit Imposition, double click on the PS window (or chose Show Sheet View) to open Press Sheet View.



In the example above, a double-sided form is imposed four up. Between the facing pages 1 and 2, only trims may be adjusted. Between the stepped pages 1-1 and 2-2 both trims and gaps are adjustable. Use the white selection tool to select and hold on a margin.



In the first example, between 1-1, the gap is visible between pages and can be changed. In the second, between 1-2, only trims are selectable. The vertical gap would be changeable as well.

### Multi-Up Binding

The one time a gap is adjustable between trims of a bound product is when a multi-up binding is created. Gutters are selectable between the separate products.

